



DEREK S.K. KAWAKAMI, MAYOR  
MICHAEL A. DAHLIG, MANAGING DIRECTOR

## News Release

For Immediate Release: July 27, 2022

---

COUNTY OF KAUA'I  
TRANSPORTATION AGENCY  
CELIA MAHIKOA, EXECUTIVE  
(808) 246-8110

---

### **Road closures for Historic Kōloa Plantation Days Parade scheduled July 30; Kaua'i Bus announces temporary route changes**

KŌLOA – The annual Historic Kōloa Plantation Days Parade is scheduled for Saturday, July 30, at 10 a.m.

To accommodate the event, the Kaua'i Police Department will close off all streets along the parade route from 9 a.m. to 1 p.m. During these road closures, the Kaua'i Bus will not have service in the Kōloa area.

Road closures will include:

- Po'ipū Road (from the Old Cane Haul Road near Kiahuna Golf Course to Kōloa Road);
- Kōloa Road (from Ala Kalanikaumaka to Weliweli Road); and
- Maluhia Road (from Kōloa Road to Ala Kinoiki).

Kaua'i Bus temporary route changes include:

- No service at the Kōloa Telephone Exchange, Kōloa Elementary School, Kukuiula Store, Kōloa Post Office, and Kōloa Neighborhood Center bus stops.

The closest bus stop on the island's southern portion for those wishing to travel to Po'ipū is in Kalāheo.

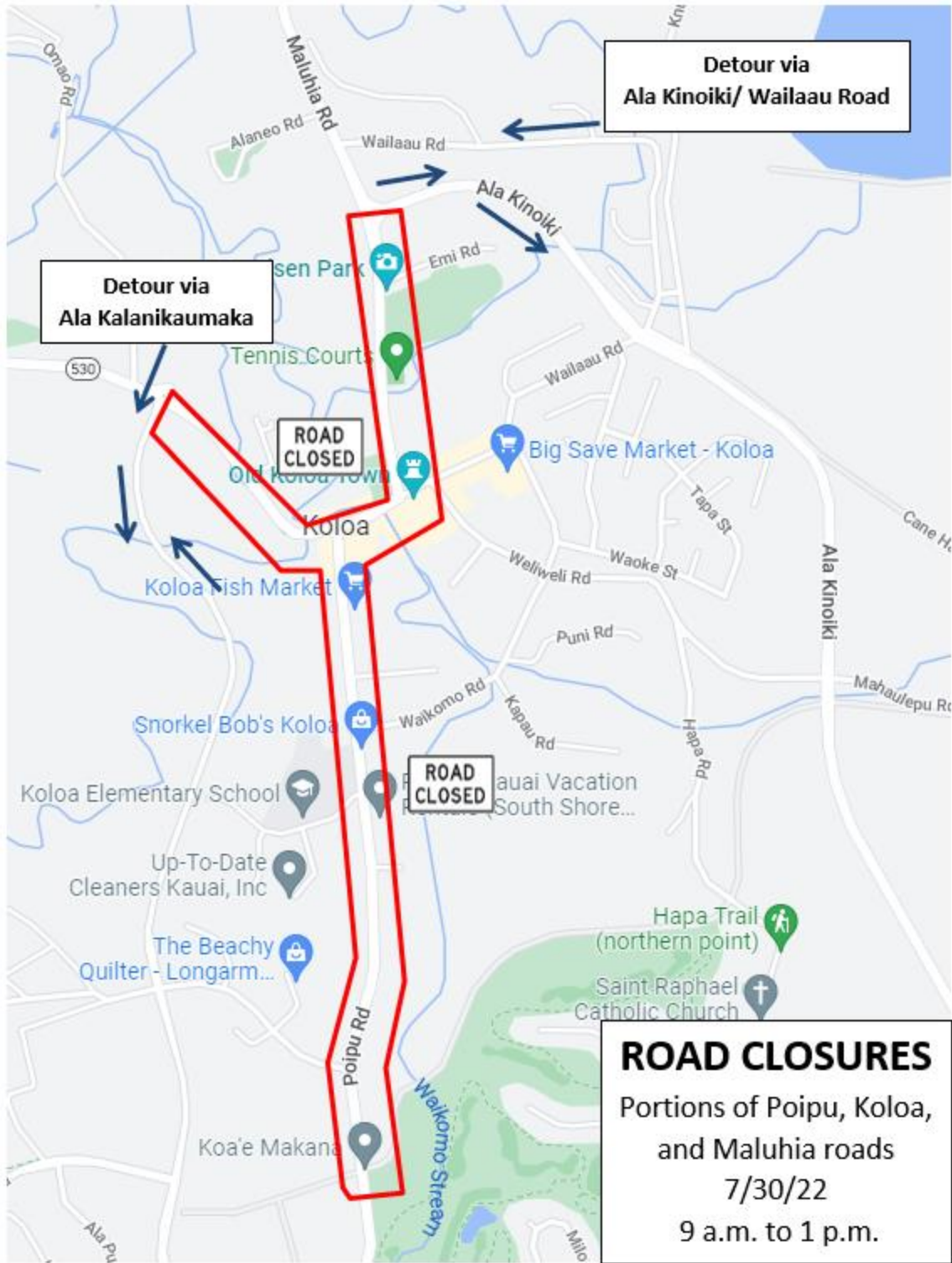
Motorists wishing to access Po'ipū and Kōloa towns during that time may do so via Waila'au Road or Ala Kinoiki, and Ala Kalanikaumaka.

In addition, on Sunday, July 31, Ho'owili Road will be closed from 6 to 9 a.m. for the Kukuiula Outrigger Canoe Club fun run. During this time, Po'ipū Beach Park can be accessed via Ho'one Road by way of Pe'e Road and Po'ipū Road.

Motorists should allow additional time to get to their destinations as traffic delays are expected. Officers will be manning all road closures.

For more information about The Kaua'i Bus, please visit the Transportation website, [www.kauai.gov/transportation](http://www.kauai.gov/transportation), or call 808-246-8110.

For more information on the parade, please visit the event website at [www.koloaplantationdays.com](http://www.koloaplantationdays.com).



###