



**DEREK S.K. KAWAKAMI, MAYOR**  
**MICHAEL A. DAHLIG, MANAGING DIRECTOR**

## **News Release**

For Immediate Release: August 29, 2022

---

COUNTY OF KAUA'I  
DEPARTMENT OF PUBLIC WORKS  
TROY TANIGAWA, ACTING COUNTY ENGINEER  
(808) 241-4993

---

### **Lane closures for Po'ipū Road scheduled from Sept. 1 to Sept. 30**

KŌLOA - The Department of Public Works and Pacific Concrete Cutting and Coring, Inc., are announcing that portions of Po'ipū Road near Kōloa Elementary School will be closed from Sept. 1 to Sept. 30, on weekdays, from 8 a.m. to 4:30 p.m. No work will occur on Sep. 5 in observance of the Labor Day holiday.

These short lane closures are necessary to improve pedestrian access to the school, including new sidewalks, crosswalks, and ADA ramps.

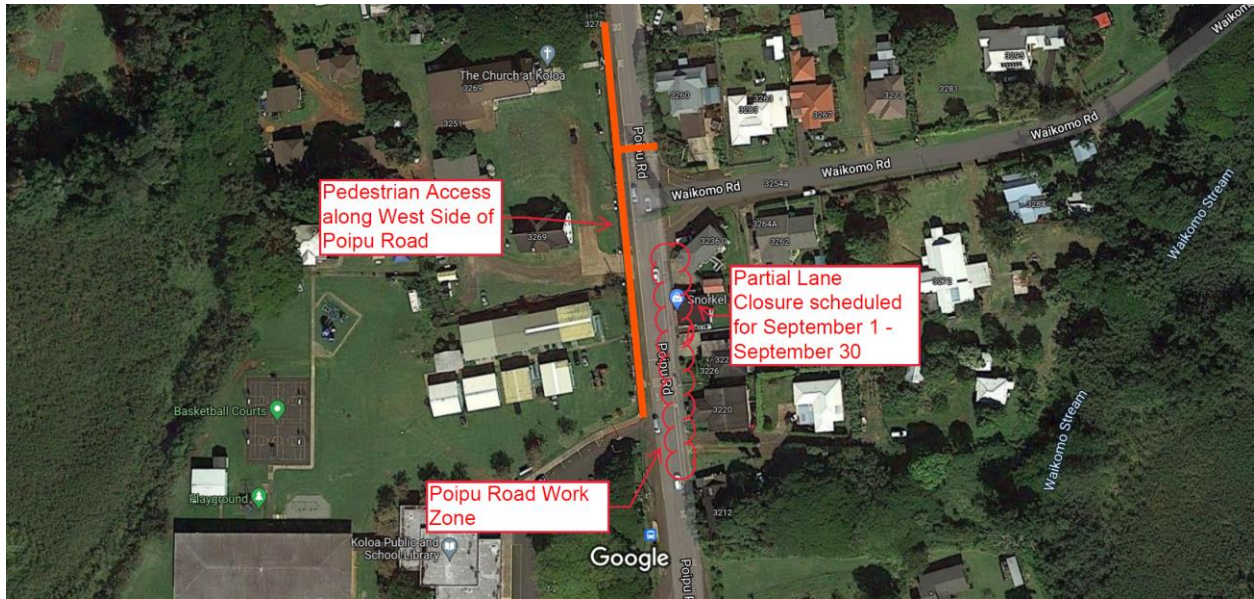
Safe walking routes for students, parents, and pedestrians will be provided and are shown in the attached figure below.

No road work will occur during the peak traffic times for school drop-off and pick-up. Expect brief occasional delays. As a reminder, the speed limit is 15 mph near Kōloa Elementary school while school is in session.

This project is scheduled to be completed in December 2022.

Dates and times are subject to change depending on weather and other factors.

Should you have any questions or concerns, please contact Keith Suga at 808-645-0822.



###