



## THE COUNTY OF KAUA'I

DEREK S. K. KAWAKAMI, MAYOR

MICHAEL A. DAHILIG, MANAGING DIRECTOR

### News Release

For Immediate Release: January 27, 2020

---

DEPARTMENT OF PUBLIC WORKS  
LYLE TABATA, DEPUTY COUNTY ENGINEER  
Tel (808) 241-4992  
Fax (808) 241-6604

---

### **Portion of Puaole Street and Vidinha Stadium road to close for reconstruction work starting Jan. 30**

LĪHU'E – The Department of Public Works and Kiewit Infrastructure West Co. are announcing that a portion of Puaole Street and the road between Vidinha Stadium and the soccer field will be closed at their intersection to Ho'olako Street. This will be a 24-hour closure from Jan. 30 to Feb. 7, weather permitting.

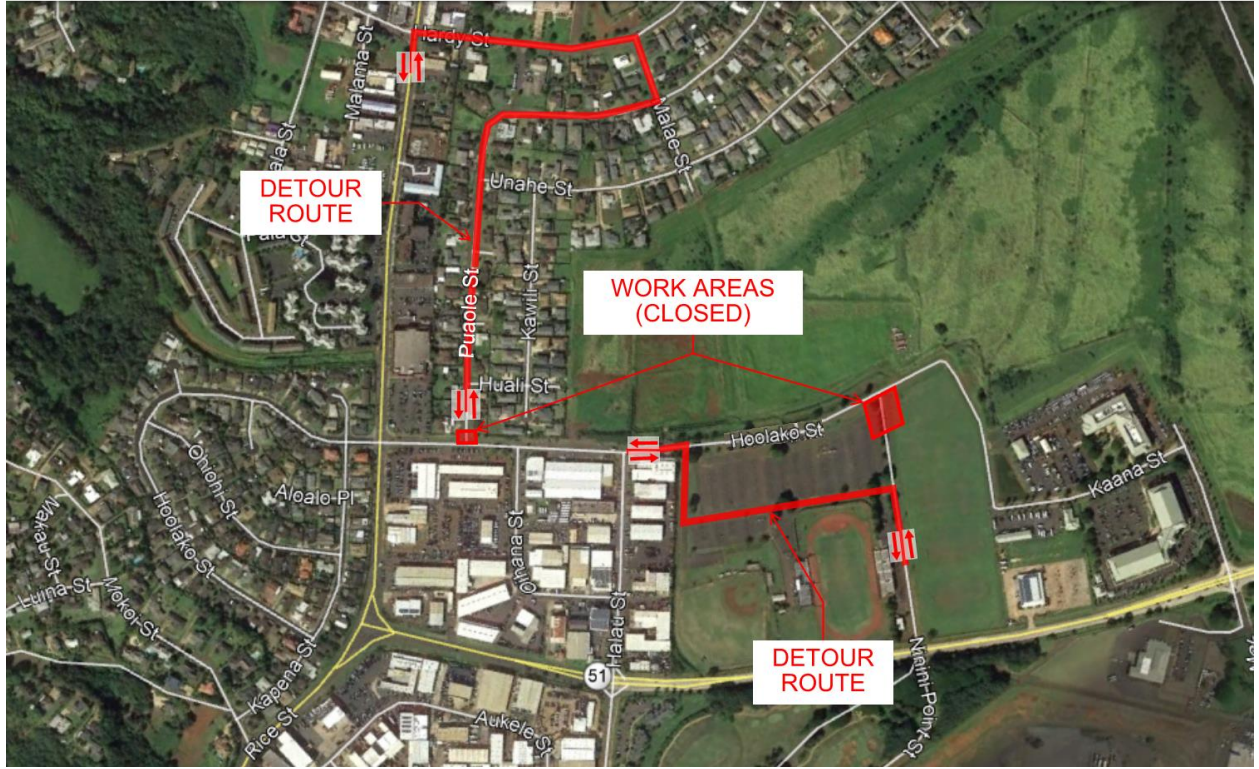
A temporary traffic detour will be available utilizing Vidinha Stadium parking lot and Puaole Street and Malae Street. The Vidinha Stadium parking lot can be accessed from Kaua'i Veterans Memorial Highway or Ho'olako Street during this time.

Motorists are encouraged to allow for extra travel time when driving near the work areas, use alternate routes, and to observe and follow all construction traffic controls. Please exercise caution when commuting through the work areas. Access to businesses along Ho'olako Street will be maintained during construction.

Part of Phase 1 of the Līhu'e Town Core Mobility and Revitalization project, the scope of remaining work for Ho'olako Street and these two street intersections consists of demolition, roadway reconstruction, and paving.

If you have any questions or concerns, please contact Milissa Ceria at 808-840-3282 or visit [www.revitalizelihuetown.com](http://www.revitalizelihuetown.com). The project website will also include construction schedule updates.





###