



THE COUNTY OF KAUA'I

DEREK S. K. KAWAKAMI, MAYOR

MICHAEL A. DAHILIG, MANAGING DIRECTOR

News Release

For Immediate Release: February 3, 2020

DEPARTMENT OF PUBLIC WORKS
LYLE TABATA, DEPUTY COUNTY ENGINEER
Tel (808) 241-4996
Fax (808) 241-6604

Lane closures scheduled for portions of streets in Līhu'e from Feb. 5 to Feb. 7

LĪHU'E – The Department of Public Works is announcing that portions of streets in Līhu'e will be closed from Feb. 5 to Feb. 7 on weekdays to allow for road reconstruction work from 8 a.m. to 4 p.m., weather permitting.

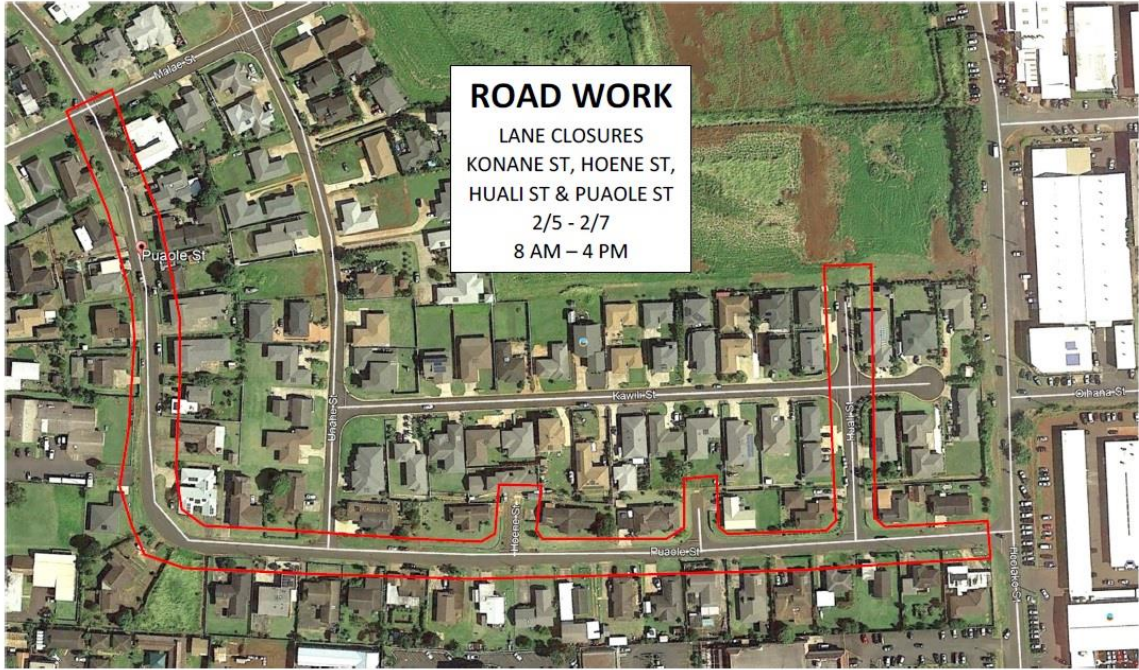
Work will be held along Konane Street, Hoene Street, Huali Street, and Puaole Street.

One lane of alternating traffic will be maintained. Flaggers will be positioned to assist motorists during these closures.

Please make the appropriate arrangements to accommodate the necessary road closures and allow for extra time to get to destinations.

Anyone with questions may contact Maui Kupono Builders at 808-369-1800 or the County of Kaua'i Roads Division at 808-241-4847.





ROAD WORK
LANE CLOSURES
KONANE ST, HOENE ST,
HUALI ST & PUAOLE ST
2/5 - 2/7
8 AM - 4 PM

###