



DEREK S.K. KAWAKAMI, MAYOR
MICHAEL A. DAHLIG, MANAGING DIRECTOR

News Release

For Immediate Release: May 2, 2022

COUNTY OF KAUA'I
DEPARTMENT OF PUBLIC WORKS
TROY TANIGAWA, ACTING COUNTY ENGINEER
(808) 241-4993

Lane closures for portions of Hanapēpē Road scheduled May 5 to 9

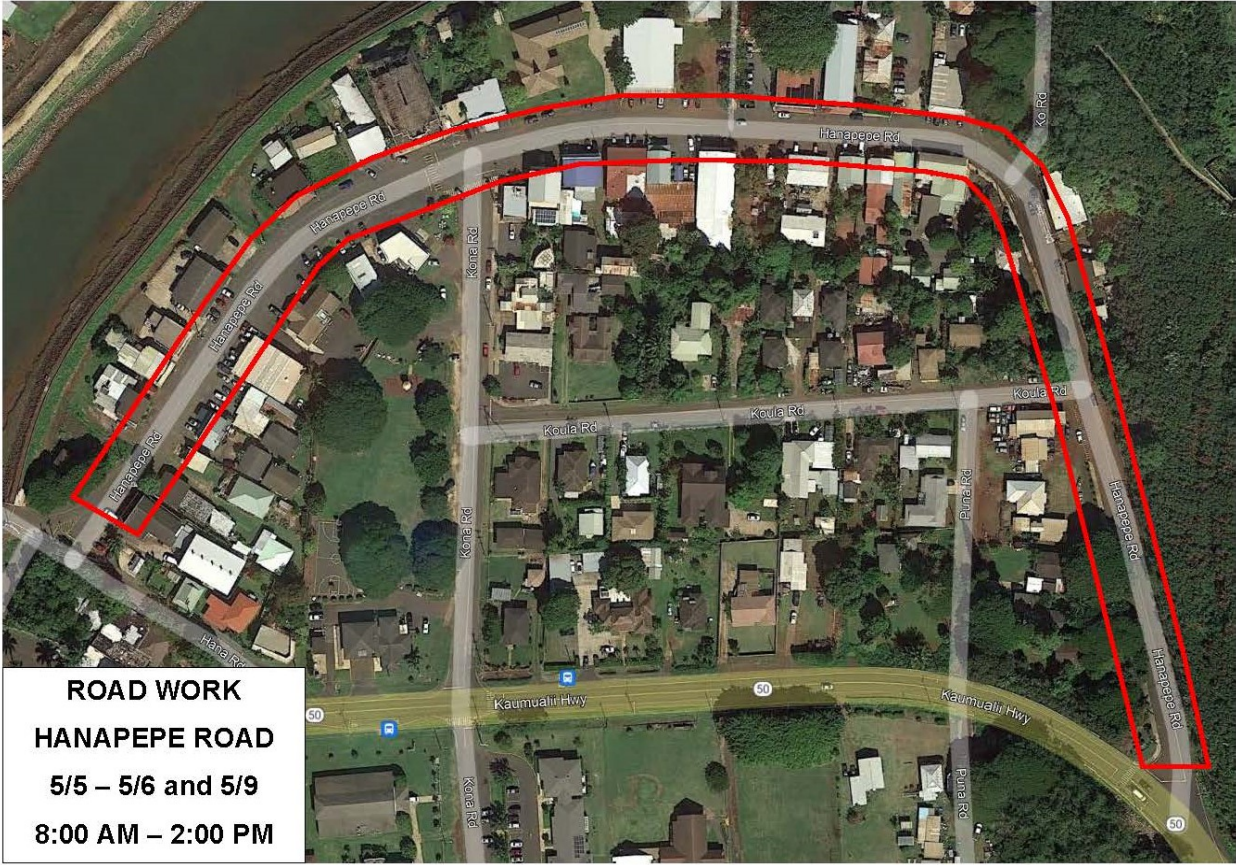
HANAPĒPĒ – The Department of Public Works Roads Division announces that occasional one-lane closures on portions of Hanapēpē Road will occur from May 5 to 9, weekdays, from 8 a.m. to 2 p.m.

These closures are necessary for crews to clean catch basins at drainpipes within the area.

Motorists are encouraged to allow for extra travel time when driving near the work area and follow all construction traffic controls. Flaggers will be positioned at the ends of the closures to assist motorists through the work zone.

Dates and times are subject to change depending on weather and other factors.

If you have any questions or concerns, please contact Bryson Vivas at (808) 241-4844.



###