

PUBLIC ACCESS, OPEN SPACE, AND NATURAL RESOURCES PRESERVATION FUND COMMISSION

JODI A. HIGUCHI SAYEGUSA, CLERK OF COMMISSION

SHAYLYN KIMURA, CHAIR
NANCY KANNA, VICE CHAIR
TARYN DIZON, MEMBER
JONATHAN LUCAS, MEMBER
MARK ONO, MEMBER
ROBIN PRATT, MEMBER
MAI SHINTANI, MEMBER

MEMORANDUM

TO: Shaylyn Kimura, Chairperson
County of Kaua'i Public Access, Open Space, and Natural Resources Preservation
Fund Commission

Members
County of Kaua'i Public Access, Open Space, and Natural Resources Preservation
Fund Commission

FROM: Jodi Higuchi Sayegusa, 
Clerk of the Commission

DATE: October 10, 2022

Re: Receipt of Halulu Fishpond – Updated Fact Sheet and Project Map – Waipā
Foundation

As Clerk to the Commission, I am transmitting an updated Fact Sheet and Project Map for the Halulu Fishpond Project regarding the following agenda item:

I. NEW BUSINESS (For Action)

1. Update on a 1.8 acre property known as Kaluanono, further identified as Tax Map Key (TMK) (4) 5-6-004:010 and a .25 acre property known as Halulu Fishpond further identified as Tax Map Key (TMK) (4) 5-6-004:017 located in Waipa, Waipa Ahupuaa, Halalea Moku. (Preliminary report 4/9/15, Supplemental report 5/9/19)



TRUST FOR
PUBLIC
LAND™



Halulu Fishpond Access

Waipā Foundation's work evolved from the community's first efforts in the early 1980's to save the Waipā ahupua'a from resort development. Today, the non-profit organization leases and stewards 1,672 acres, managing the land from mauka to makai as a community space and living learning center. Waipā's programs serve thousands of lifelong learners each year from target communities near and far with a special focus on youth and families from its core geographic community. Waipā Foundation's mission is to restore the valley's vibrant natural systems and resources and inspire healthy, thriving communities connected to their resources.

Connecting Community

Over the years Waipā has developed and maintains a cultural landscape for learning, and implements transformative, `āina based learning programs within this landscape. Its spaces and facilities support farmers, food entrepreneurs, programs and community events and celebrations. Programs on school breaks, weekends and after school serve hundreds of children and youth across two generations in the surrounding communities. However, Waipā Foundation and its nearly 30 years of impactful work in Kaua'i's community are vulnerable, as all of its operations are on leased land. As a landowner in the valley, Waipā's ability to ensure the future of its mission and work would be more secure.

Halulu Fishpond Access

The privately-owned .25-acre Halulu Fishpond Access property is a kuleana in-holding within the surrounding ahupua'a stewarded by Waipā Foundation. Halulu Fishpond Access includes the community path to Waipā's coastal zone along Hanalei Bay, Halulu Fishpond, and part of the fishpond itself. Each year, thousands of lifelong learners, program participants and community walk through the Halulu Fishpond Access property to learn about and enjoy the fishpond, coastal strand and estuary.

The property is currently surrounded by large luxury oceanfront homes. If an outside entity with different land use goals bought the property, community access and the natural serenity of the space would be forever lost. Waipā Foundation's ownership will guarantee continued community access and strengthen its ability to continue impactful programming and steward the entire ahupua'a, mauka to makai. The property would also give the Foundation a permanent foothold on Kaua'i's north shore, ensuring that Waipā continues to be a thriving place that feeds, inspires and nurtures the community and all who visit. Through development restrictions required by the public funders, the cultural and community use of the land will continue in perpetuity.



Community Vision

Waipā Foundation will own and manage the Halulu Fishpond Access as part of its living learning center where Hawaiian and local values, knowledge, practices, skills and food are elevated, taught, and shared. This land will serve as the welcoming gateway to Waipā makai, through which community will continue to access the Halulu fishpond, Wai'oli stream estuary and coast along Hanalei Bay.

Conservation Funding Sources

Total Funding Need:	\$1.1-1.3M
Funding Sources	
- State of Hawai'i Legacy Land Conservation Fund	\$50,000
- State CIP (mahalo Sen. Kouchi!)	\$400,000
- County of Kauai Open Space Fund (pending)	\$850,000

About Trust for Public Land

Since 1979, Trust for Public Land has conserved over 75,000 acres and counting throughout the State of Hawai'i. Through our land protection efforts, we engage local residents in safeguarding resources that are special and significant to their communities. Our immediate priorities include conserving lands that enhance trails & parks; protect food, forests & water; and create opportunities for Hawaiian land stewardship.



**TRUST FOR
PUBLIC
LAND™**

Connecting everyone to the outdoors™
tpl.org

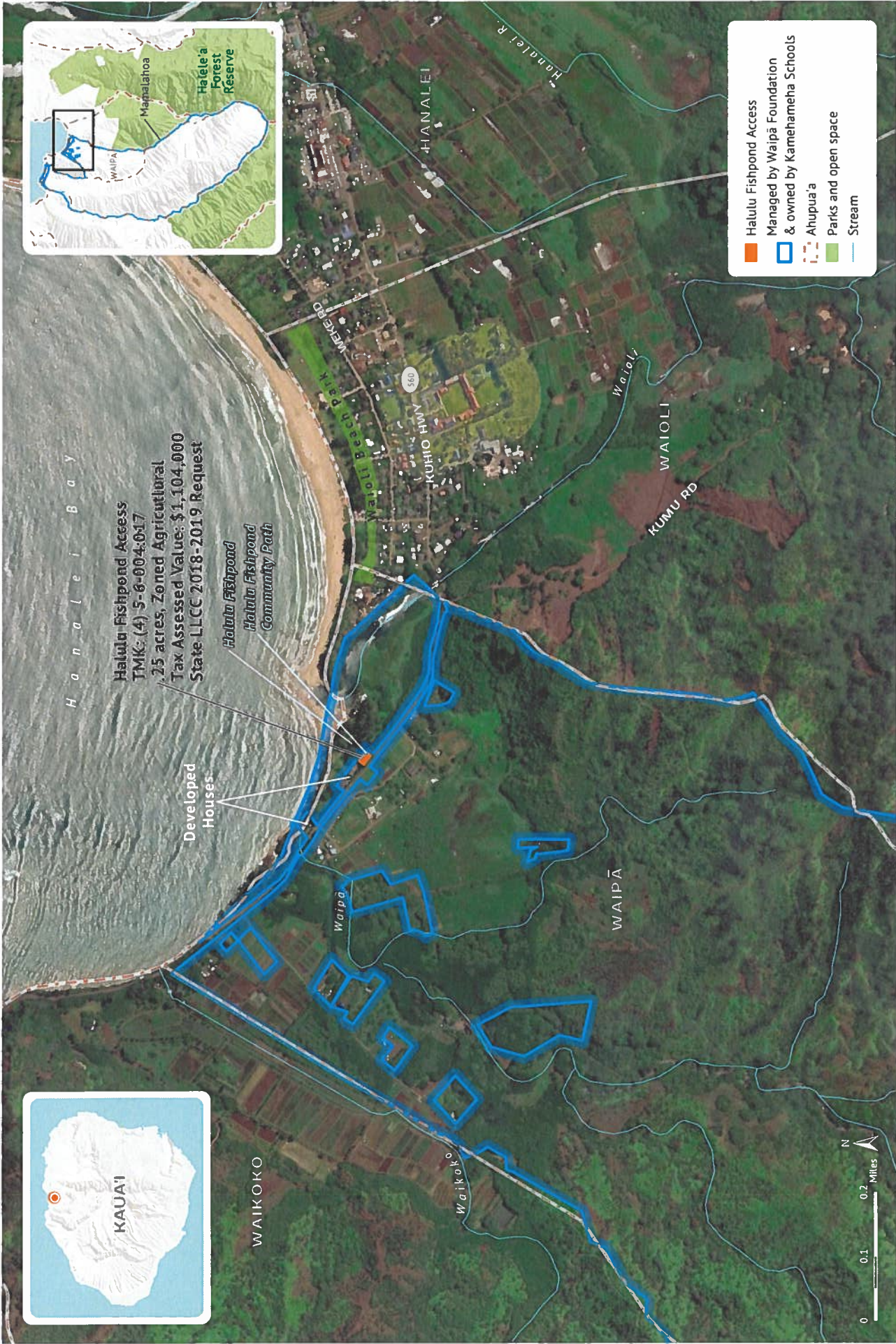


‘Āina. Culture. Community.

FOR MORE INFORMATION:

Lea Hong
State Director
808.783.3653
lea.hong@tpl.org

PHOTOS: TPL Staff.



Halulu Fishpond Access
 TMK: (4) 5-6-004-017
 2.5 acres, Zoned Agricultural
 Tax Assessed Value: \$1,104,000
 State LLC 2018-2019 Request

Developed Houses:

Halulu Fishpond
 Halulu Fishpond
 Community Path

- Halulu Fishpond Access
- Managed by Waipā Foundation & owned by Kamehameha Schools
- Ahupua'a
- Parks and open space
- Stream

Halulu Fishpond Access

WAIPĀ, HALELE'A, ISLAND OF KAUAI, HAWAII

October 7, 2022. Copyright © Trust for Public Land and Trust for Public Land logo are federally registered marks of Trust for Public Land. Information on this map is provided for purposes of discussion and visualization only www.tpl.org



TRUST FOR PUBLIC LAND™