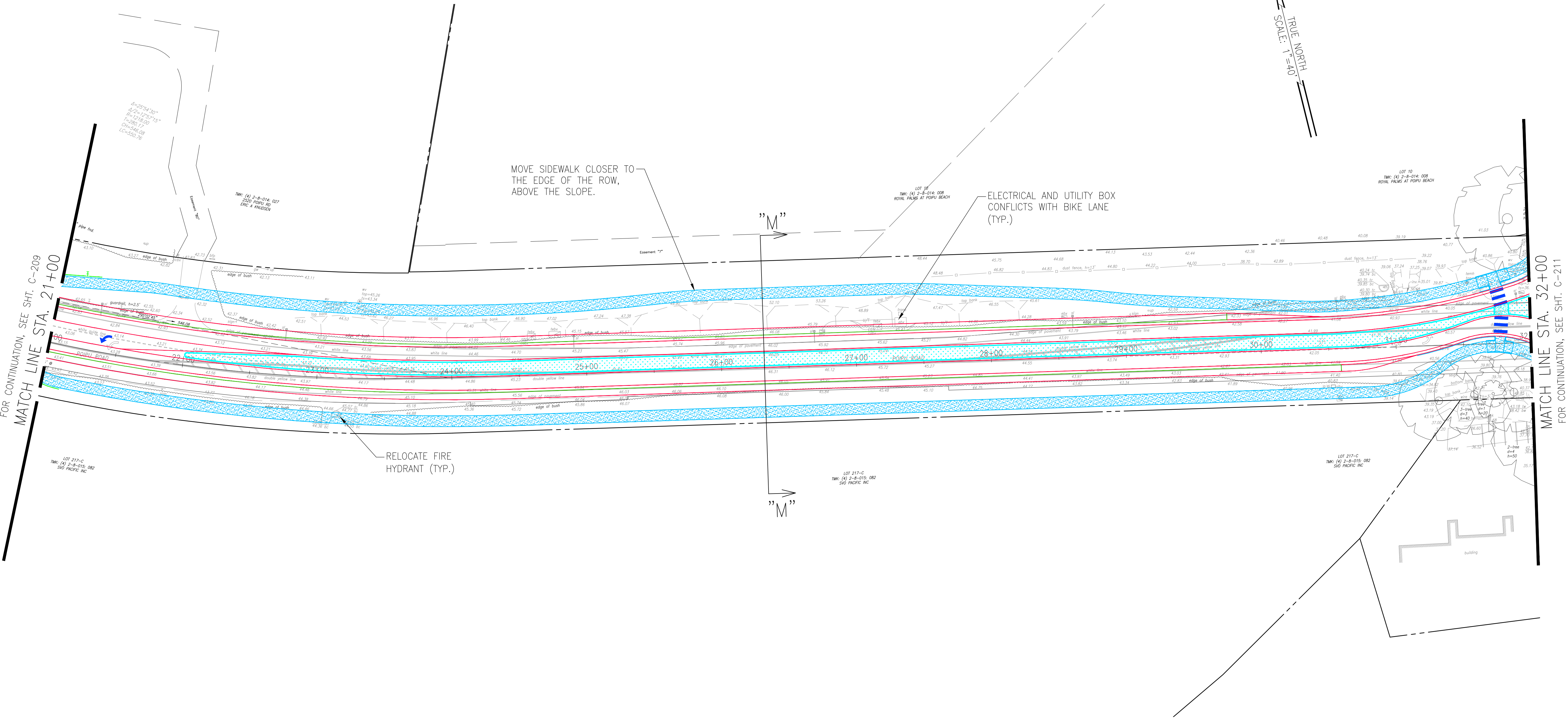


FED. ROAD DIST. NO.	STATE	FED. AID PROJ. NO.	FISCAL YEAR	SHEET NO.	TOTAL SHEETS
KAUAI	HAW.	STP-5010(002)	2021	XX	XX



SECTION M-M SUMMARY:
8.0' - MULTI-USE PATH
VARIES - TREE BUFFER
6.0' - DRAINAGE SWALE
5.0' - DEDICATED BIKE LANE
2.0' - BUFFER
10.0' - TRAVEL WAY
12.0' - MEDIAN (10' WIDE RAISED)
10.0' - TRAVEL WAY
2.0' - BUFFER
5.0' - DEDICATED BIKE LANE
12.0' - SWALE AND LANDSCAPING
8.0' - MULTI-USE PATH




THIS WORK WAS PREPARED BY ME OR UNDER MY SUPERVISION AND CONSTRUCTION OF THIS PROJECT WILL BE UNDER MY OBSERVATION AS DEFINED IN SECTION 16-115-2, HAWAII ADMINISTRATIVE RULES, DEPARTMENT OF COMMERCE AND CONSUMER AFFAIRS, STATE OF HAWAII. PROFESSIONAL ENGINEERS, ARCHITECTS, SURVEYORS AND LANDSCAPE ARCHITECTS.

LICENSE EXPIRES: APRIL 30, 2018

DWG. NO. **C-210**
SHEET XX OF XX

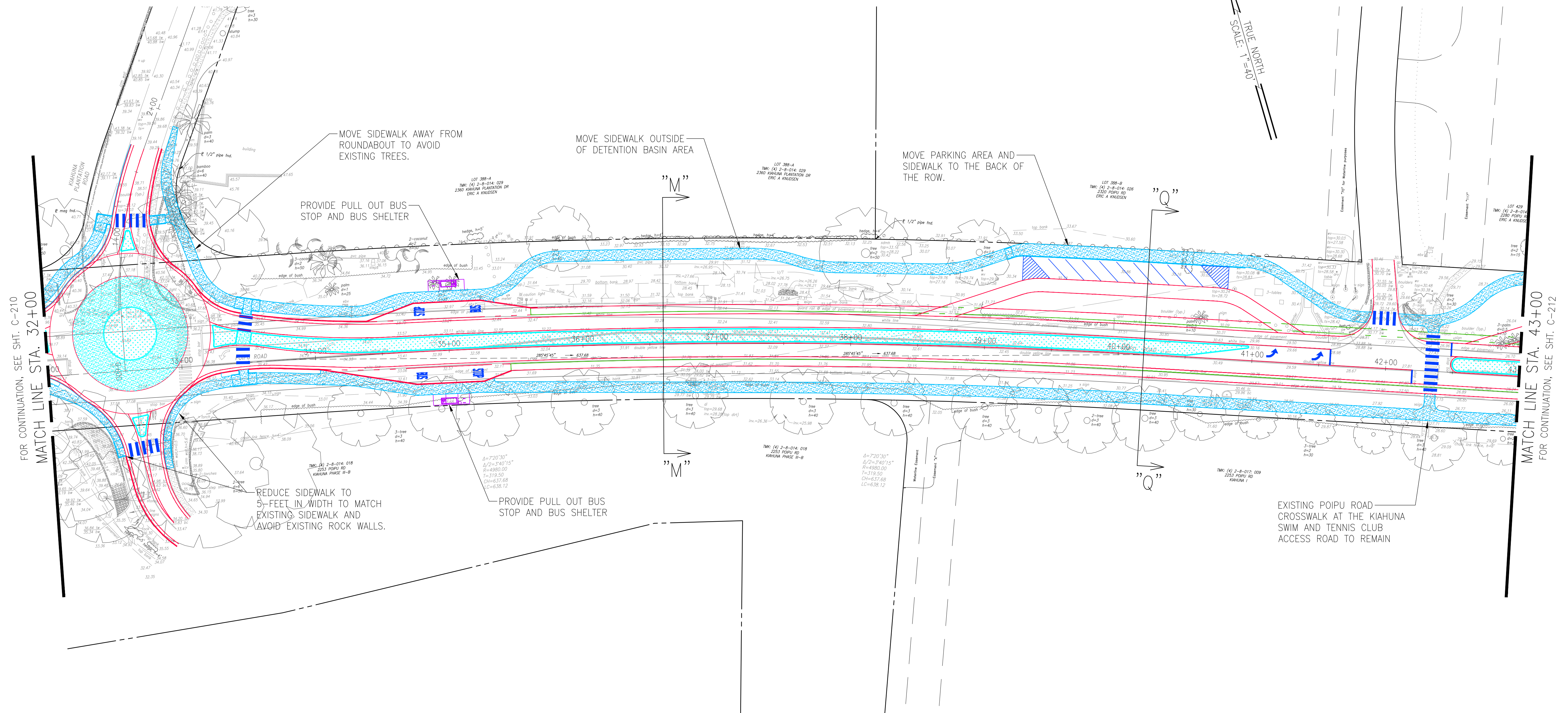
0 1 2
LINE IS 2 INCHES AT FULL SIZE
(IF NOT 2-inches : Scale Accordingly)

REVISION	DATE	BRIEF	MADE BY	APPROVED
<div><div>Austin Tsutsumi & ASSOCIATES, INC. Engineers & Surveyors</div></div>				
PO'IPU ROAD MULTIMODAL IMPROVEMENTS FEDERAL-AID PROJECT NO. STP-5010(2) PO'IPU, KOLOA, KAUAI, HAWAII				
POIPU ROAD EAST STA. 21+00 TO STA. 32+00				
DESIGNED BY: KU, KA		DRAWN BY: DO		CHECKED BY: KU
APPROVED			SUBMITTED BY	
DATE		FIRM MEMBER		DATE

DATE: XXXXXXXXXXXXX

FILE	POCKET	FOLDER	NO.

FED. ROAD DIST. NO.	STATE	FED. AID PROJ. NO.	FISCAL YEAR	SHEET NO.	TOTAL SHEETS
KAUAI	HAW.	STP-5010(002)	2021	XX	XX



SECTION M-M SUMMARY:

- 8.0' – MULTI-USE PATH
- VARIABLES – TREE BUFFER
- 6.0' – DRAINAGE SWALE
- 5.0' – DEDICATED BIKE LANE
- 2.0' – BUFFER
- 10.0' – TRAVEL WAY
- 12.0' – MEDIAN (10' WIDE RAISED)
- 10.0' – TRAVEL WAY
- 2.0' – BUFFER
- 5.0' – DEDICATED BIKE LANE
- 12.0' – SWALE AND LANDSCAPING
- 8.0' – MULTI-USE PATH

SECTION Q-Q SUMMARY:

- 9.5' – MULTI-USE PATH
- 16.0' – DIAGONAL PARKING
- 10.0' – ACCESS LANE
- 14.0' – SHOULDER
- 5.0' – DEDICATED BIKE LANE
- 2.0' – BUFFER
- 10.0' – TRAVEL WAY
- 12.0' – MEDIAN (10' WIDE RAISED)
- 10.0' – TRAVEL WAY
- 2.0' – BUFFER
- 5.0' – DEDICATED BIKE LANE
- 12.0' – SWALE AND LANDSCAPING
- 8.0' – MULTI-USE PATH

A circular professional engineer seal. The outer ring contains the text "MATTHEW K. UNTEN" at the top and "HAWAII, U.S.A." at the bottom, separated by two five-pointed stars. The inner circle contains the text "LICENSED PROFESSIONAL ENGINEER" and "No. 13463-C".


THIS WORK WAS PREPARED BY ME OR UNDER MY SUPERVISION AND CONSTRUCTION OF THIS PROJECT WILL BE UNDER MY OBSERVATION AS DEFINED IN SECTION 16-115-2, HAWAII ADMINISTRATIVE RULES, DEPARTMENT OF COMMERCE AND CONSUMER AFFAIRS, STATE OF HAWAII, PROFESSIONAL ENGINEERS, ARCHITECTS, SURVEYORS AND LANDSCAPE ARCHITECTS.

LICENSE EXPIRES: APRIL 30, 2018

DWG. NO. **C-211**
SHEET XX OF XX



REVISION	DATE	BRIEF	MADE BY APPROVED



Austin Tsutsumi

& ASSOCIATES, INC.

Engineers & Surveyors

PO'IPU ROAD MULTIMODAL IMPROVEMENTS

FEDERAL-AID PROJECT NO. STP-5010(2)

PO'IPU, KOLOA, KAUAI, HAWAII

POIPU ROAD EAST STA. 32+00

TO STA. 43+00

DESIGNED BY: KU, KA	DRAWN BY: DO	CHECKED BY: KU
APPROVED		SUBMITTED BY

DATE

FIRM MEMBER

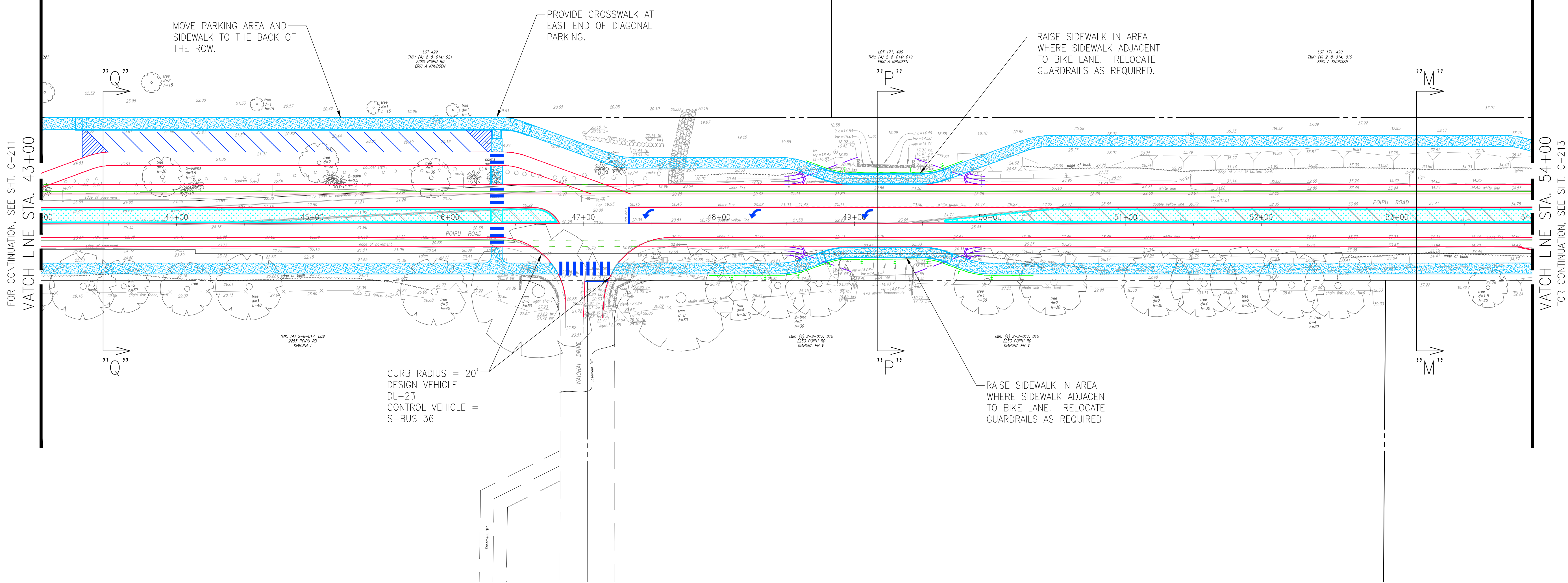
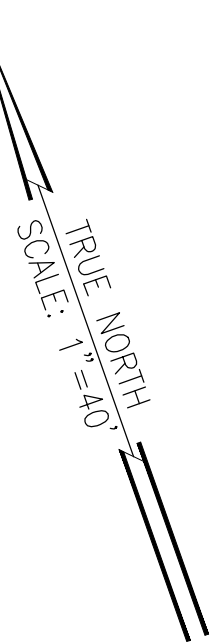
DATE

DATE: XXXXXXXXXXXXXXXX

FILE	POCKET	FOLDER	NO.

Y:\2016\16-013\ENGINEERING\DWG\RAISE GRANT SET\C-212 POIPIU ROAD EAST STA. 43+00 TO STA. 54+00.dwg: December 4, 2018

FED. ROAD DIST. NO.	STATE	FED. AID PROJ. NO.	FISCAL YEAR	SHEET NO.	TOTAL SHEETS
KAUAI	HAW.	STP-5010(002)	2021	XX	XX



SECTION Q-Q SUMMARY:

- 8.0' - MULTI-USE PATH
- 16.0' - DIAGONAL PARKING
- 10.0' - ACCESS LANE
- 14.0' - SHOULDER
- 5.0' - DEDICATED BIKE LANE
- 2.0' - BUFFER
- 10.0' - TRAVEL WAY
- 12.0' - MEDIAN (10' WIDE RAISED)
- 10.0' - TRAVEL WAY
- 2.0' - BUFFER
- 5.0' - DEDICATED BIKE LANE
- 12.0' - SWALE AND LANDSCAPING
- 8.0' - MULTI-USE PATH

SECTION P-P SUMMARY:

- 8.0' - MULTI-USE PATH
- 5.0' - DEDICATED BIKE LANE
- 2.0' - BUFFER
- 10.0' - TRAVEL WAY
- 12.0' - LEFT TURN LANE
- 10.0' - TRAVEL WAY
- 2.0' - BUFFER
- 5.0' - DEDICATED BIKE LANE
- 8.0' - MULTI-USE PATH

SECTION M-M SUMMARY:

- 8.0' - MULTI-USE PATH
- VARIABLE - TREE BUFFER
- 6.0' - DRAINAGE SWALE
- 5.0' - DEDICATED BIKE LANE
- 2.0' - BUFFER
- 10.0' - TRAVEL WAY
- 12.0' - MEDIAN (10' WIDE RAISED)
- 10.0' - TRAVEL WAY
- 2.0' - BUFFER
- 5.0' - DEDICATED BIKE LANE
- 12.0' - SWALE AND LANDSCAPING
- 8.0' - MULTI-USE PATH

CURB RADIUS = 20'
DESIGN VEHICLE =
DL-23
CONTROL VEHICLE =
S-BUS 36



THIS WORK WAS PREPARED BY ME OR UNDER MY SUPERVISION AND CONSTRUCTION OF THIS PROJECT WILL BE UNDER MY OBSERVATION AS DEFINED IN SECTION 16-115-2, HAWAII ADMINISTRATIVE RULES, DEPARTMENT OF COMMERCE AND CONSUMER AFFAIRS, STATE OF HAWAII. PROFESSIONAL ENGINEERS, ARCHITECTS, SURVEYORS AND LANDSCAPE ARCHITECTS.

LICENSE EXPIRES: APRIL 30, 2018

DWG. NO. **C-212**
SHEET XX OF XX

0 1 2
LINE IS 2 INCHES AT FULL SIZE
(IF NOT 2-INCHES : Scale Accordingly)

REVISION	DATE	BRIEF	MADE BY	APPROVED
<div><div><div><div><div><div></div><div>Austin Tsutsumi</div></div></div><div><div></div><div>& ASSOCIATES, INC.</div></div></div><div><div>Engineers & Surveyors</div></div></div><div>POIPIU ROAD MULTIMODAL IMPROVEMENTS FEDERAL-AID PROJECT NO. STP-5010(2) POIPIU, KOLOA, KAUAI, HAWAII</div><div>POIPIU ROAD EAST STA. 43+00 TO STA. 54+00</div></div>				
DESIGNED BY: KU, KA		DRAWN BY: DO		CHECKED BY: KU
APPROVED		SUBMITTED BY		
DATE		FIRM MEMBER		DATE

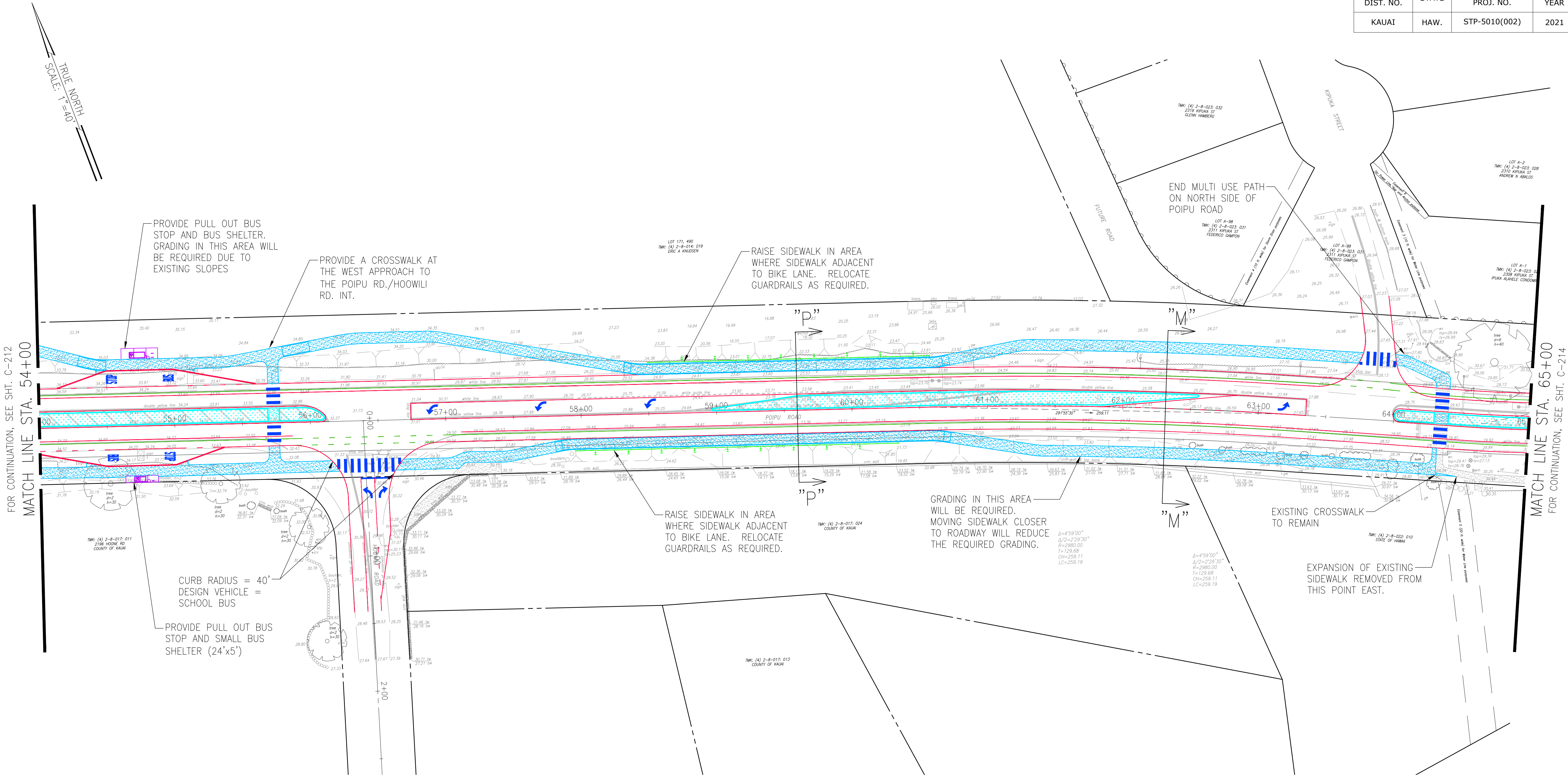
DATE: XXXXXXXXXXXXX

FILE	POCKET	FOLDER	NO.

Y:\2016\16-013\ENGINEERING\DWG\RAISE GRANT SET\C-213 POIPU ROAD EAST STA. 54+00 TO STA. 65+00.dwg: December 4, 2018

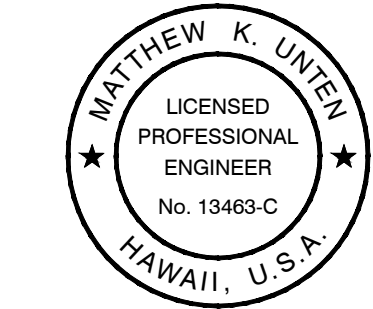
JOB NO. XX-XXX

FED. ROAD DIST. NO.	STATE	FED. AID PROJ. NO.	FISCAL YEAR	SHEET NO.	TOTAL SHEETS
KAUAI	HAW.	STP-5010(002)	2021	XX	XX



SECTION M-M SUMMARY:
8.0' - MULTI-USE PATH
VARIES - TREE BUFFER
6.0' - DRAINAGE SWALE
5.0' - DEDICATED BIKE LANE
2.0' - BUFFER
10.0' - TRAVEL WAY
12.0' - MEDIAN (10' WIDE RAISED)
10.0' - TRAVEL WAY
2.0' - BUFFER
5.0' - DEDICATED BIKE LANE
12.0' - SWALE AND LANDSCAPING
8.0' - MULTI-USE PATH

SECTION P-P SUMMARY:
8.0' - MULTI-USE PATH
5.0' - DEDICATED BIKE LANE
2.0' - BUFFER
10.0' - TRAVEL WAY
12.0' - LEFT TURN LANE
10.0' - TRAVEL WAY
2.0' - BUFFER
5.0' - DEDICATED BIKE LANE
8.0' - MULTI-USE PATH



THIS WORK WAS PREPARED BY ME OR UNDER MY SUPERVISION AND CONSTRUCTION OF THIS PROJECT WILL BE UNDER MY OBSERVATION AS DEFINED IN SECTION 16-115-2, HAWAII ADMINISTRATIVE RULES, DEPARTMENT OF COMMERCE AND CONSUMER AFFAIRS, STATE OF HAWAII. PROFESSIONAL ENGINEERS, ARCHITECTS, SURVEYORS AND LANDSCAPE ARCHITECTS.

LICENSE EXPIRES: APRIL 30, 2018

DWG. NO. **C-213**
SHEET XX OF XX

0 1 2
LINE IS 2 INCHES AT FULL SIZE
(IF NOT 2-INCHES : Scale Accordingly)

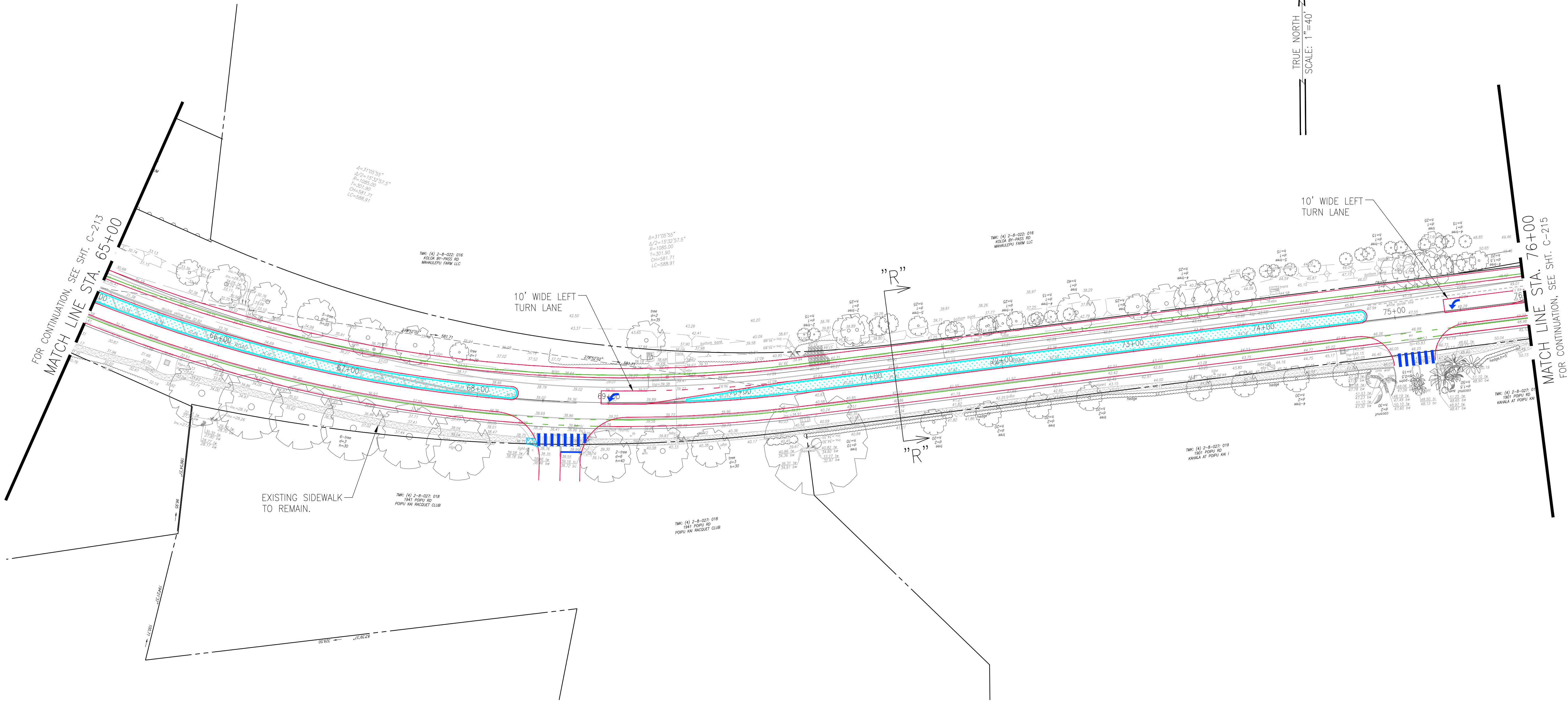
REVISION	DATE	BRIEF	MADE BY	APPROVED
<div><div></div><div><div>Austin Tsutsumi</div><div>& ASSOCIATES, INC.</div><div>Engineers & Surveyors</div></div></div>				
PO'IPU ROAD MULTIMODAL IMPROVEMENTS FEDERAL-AID PROJECT NO. STP-5010(2) PO'IPU, KOLOA, KAUAI, HAWAII				
POIPU ROAD EAST STA. 54+00 TO STA. 65+00				
DESIGNED BY KU, KA		DRAWN BY DO		CHECKED BY KU
APPROVED		SUBMITTED BY		
DATE		FIRM MEMBER		DATE

DATE: XXXXXXXXXXXXX

FILE	POCKET	FOLDER	NO.

Y:\2016\16-013\ENGINEERING\DWG\RAISE GRANT SET\C-214 POIPU ROAD EAST STA. 65+00 TO STA. 76+00.dwg; December 4, 2018

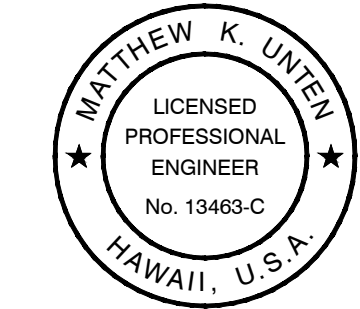
JOB NO. XX-XXX



FED. ROAD DIST. NO.	STATE	FED. AID PROJ. NO.	FISCAL YEAR	SHEET NO.	TOTAL SHEETS
KAUAI	HAW.	STP-5010(002)	2021	XX	XX

TRUE NORTH
SCALE: 1"=40'

SECTION R-R SUMMARY:
5.0' - DEDICATED BIKE LANE
2.0' - BUFFER
10.0' - TRAVEL WAY
10.0' - MEDIAN (8' WIDE RAISED)
10.0' - TRAVEL WAY
2.0' - BUFFER
5.0' - DEDICATED BIKE LANE
VARIES - DRAINAGE SWALE AND LANDSCAPING
5.0' - MULTI-USE PATH



THIS WORK WAS PREPARED BY ME OR UNDER MY SUPERVISION AND CONSTRUCTION OF THIS PROJECT WILL BE UNDER MY OBSERVATION AS DEFINED IN SECTION 16-115-2, HAWAII ADMINISTRATIVE RULES, DEPARTMENT OF COMMERCE AND CONSUMER AFFAIRS, STATE OF HAWAII. PROFESSIONAL ENGINEERS, ARCHITECTS, SURVEYORS AND LANDSCAPE ARCHITECTS.

LICENSE EXPIRES: APRIL 30, 2018

DWG. NO. **C-214**
SHEET XX OF XX

0 1 2
LINE IS 2 INCHES AT FULL SIZE
(IF NOT 2-INCHES : Scale Accordingly)

REVISION	DATE	BRIEF	MADE BY	APPROVED
Austin Tsutsumi & Associates, Inc. Engineers & Surveyors				
PO'IPU ROAD MULTIMODAL IMPROVEMENTS FEDERAL-AID PROJECT NO. STP-5010(2) PO'IPU, KOLOA, KAUAI, HAWAII				
POIPU ROAD EAST STA. 65+00 TO STA. 76+00				
DESIGNED BY: KU, KA	DRAWN BY: DO	CHECKED BY: KU	APPROVED	
SUBMITTED BY		DATE	FIRM MEMBER	DATE

DATE: XXXXXXXXXXXXX

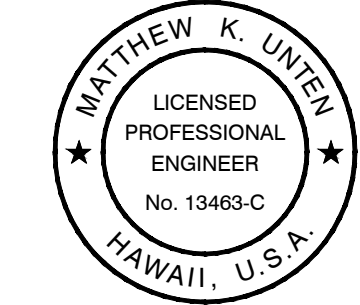
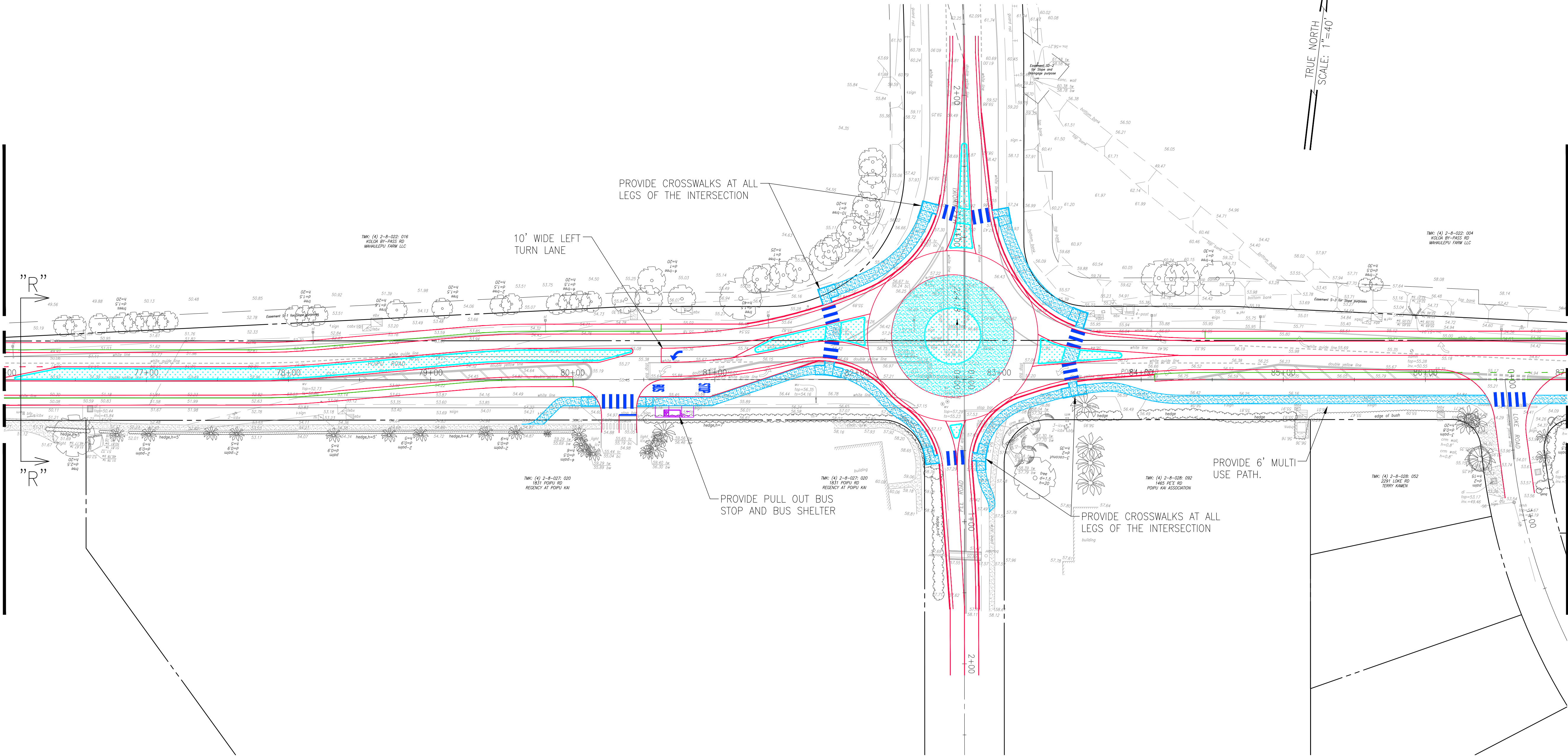
FILE	POCKET	FOLDER	NO.

Y:\2016\16-013\ENGINEERING\DWG\RAISE GRANT SET\C-215 POIPU ROAD EAST STA. 76+00 TO STA. 87+00.dwg: December 4, 2018

JOB NO. XX-XXX

SECTION R-R SUMMARY:
5.0' - DEDICATED BIKE LANE
2.0' - BUFFER
10.0' - TRAVEL WAY
10.0' - MEDIAN (8' WIDE RAISED)
10.0' - TRAVEL WAY
2.0' - BUFFER
5.0' - DEDICATED BIKE LANE
VARIES - DRAINAGE SWALE AND LANDSCAPING
8.0' - MULTI-USE PATH

MATCH LINE STA. 76+00
FOR CONTINUATION, SEE SHIT. C-214



THIS WORK WAS PREPARED BY ME OR UNDER MY SUPERVISION AND CONSTRUCTION OF THIS PROJECT WILL BE UNDER MY OBSERVATION AS DEFINED IN SECTION 16-115-2, HAWAII ADMINISTRATIVE RULES, DEPARTMENT OF COMMERCE AND CONSUMER AFFAIRS, STATE OF HAWAII. PROFESSIONAL ENGINEERS, ARCHITECTS, SURVEYORS AND LANDSCAPE ARCHITECTS.

LICENSE EXPIRES: APRIL 30, 2018

DWG. NO. **C-215**
SHEET XX OF XX

0 1 2
LINE IS 2 INCHES AT FULL SIZE
(IF NOT 2-inches : Scale Accordingly)

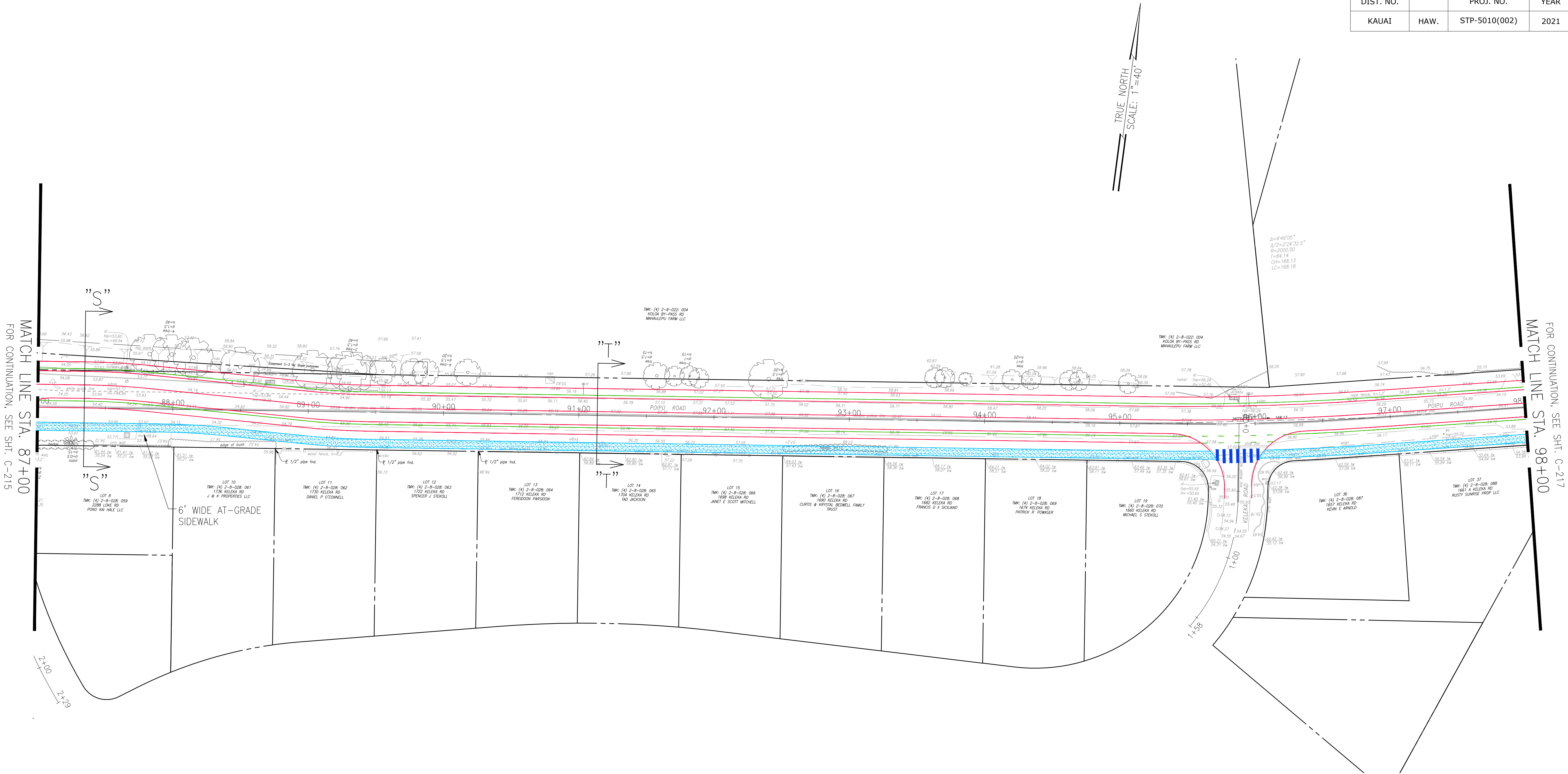
REVISION	DATE	BRIEF	MADE BY	APPROVED
Austin Tsutsumi & ASSOCIATES, INC. Engineers & Surveyors				
PO'IPU ROAD MULTIMODAL IMPROVEMENTS FEDERAL-AID PROJECT NO. STP-5010(2) PO'IPU, KOLOA, KAUAI, HAWAII				
POIPU ROAD EAST STA. 76+00 TO STA. 87+00				
DESIGNED BY: KU, KA	DRAWN BY: DO	CHECKED BY: KU	APPROVED	
SUBMITTED BY		DATE	FIRM MEMBER	DATE

DATE: XXXXXXXXXXXXX

FILE	POCKET	FOLDER	NO.

FED. ROAD DIST. NO.	STATE	FED. AID PROJ. NO.	FISCAL YEAR	SHEET NO.	TOTAL SHEETS
KAUAI	HAW.	STP-5010(002)	2021	XX	XX

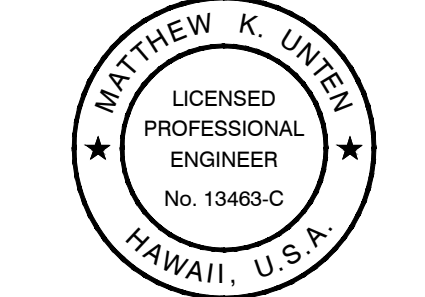
FED. ROAD DIST. NO.	STATE	FED. AID PROJ. NO.	FISCAL YEAR	SHEET NO.	TOTAL SHEETS
KAUAI	HAW.	STP-5010(002)	2021	XX	XX



MATCH LINE STA. 87+00
FOR CONTINUATION, SEE SHT. C-215

FOR CONTINUATION, SEE SHT. C-217
MATCH LINE STA. 98+00

- SECTION S-S SUMMARY:
5.0' - DEDICATED BIKE LANE
2.0' - BUFFER
10.0' - TRAVEL WAY
10.0' - TRAVEL WAY
2.0' - BUFFER
5.0' - DEDICATED BIKE LANE
VARIES - DRAINAGE SWALE AND LANDSCAPING
6.0' - MULTI-USE PATH
- SECTION T-T SUMMARY:
5.0' - DEDICATED BIKE LANE
2.0' - BUFFER
10.0' - TRAVEL WAY
10.0' - TRAVEL WAY
2.0' - BUFFER
5.0' - DEDICATED BIKE LANE
6.0' - DRAINAGE SWALE AND LANDSCAPING
6.0' - MULTI-USE PATH



THIS WORK WAS PREPARED BY ME OR UNDER MY SUPERVISION AND CONSTRUCTION OF THIS PROJECT WILL BE UNDER MY OBSERVATION AS DEFINED IN SECTION 16-115-2, HAWAII ADMINISTRATIVE RULES, DEPARTMENT OF COMMERCE AND CONSUMER AFFAIRS, STATE OF HAWAII. PROFESSIONAL ENGINEERS, ARCHITECTS, SURVEYORS AND LANDSCAPE ARCHITECTS.

LICENSE EXPIRES: APRIL 30, 2018

DWG. NO. **C-216**
SHEET XX OF XX

0 1 2
LINE IS 2 INCHES AT FULL SIZE
(IF NOT 2-INCHES : Scale Accordingly)

REVISION	DATE	BRIEF	MADE BY	APPROVED
Austin Tsutsumi & ASSOCIATES, INC. Engineers & Surveyors				
PO'IPU ROAD MULTIMODAL IMPROVEMENTS FEDERAL-AID PROJECT NO. STP-5010(2) PO'IPU, KOLOA, KAUAI, HAWAII				
POIPU ROAD EAST STA. 87+00 TO STA. 98+00				
DESIGNED BY: KU, KA	DRAWN BY: DO	CHECKED BY: KU	APPROVED	
SUBMITTED BY		DATE	FIRM MEMBER	DATE

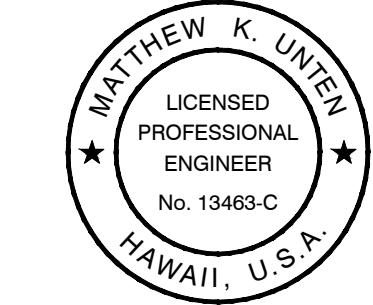
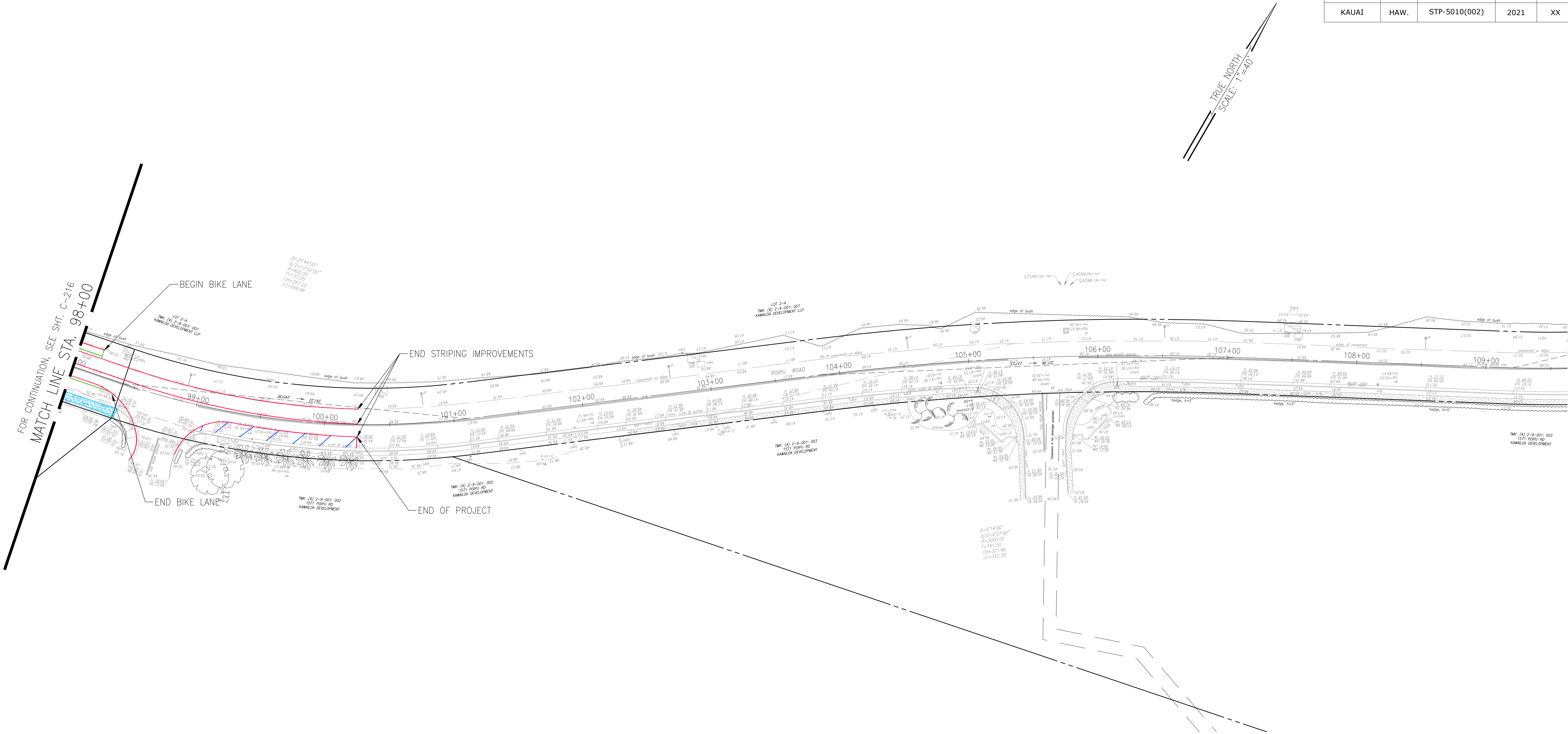
FILE	POCKET	FOLDER	NO.

Y:\2016\16-013\ENGINEERING\DWG\RAISE GRANT SET\C-216 POIPU ROAD EAST STA. 87+00 TO STA. 98+00.dwg: December 4, 2018

Y:\2016\16-013\ENGINEERING\DWG\RAISE GRANT SET\C-217 POIPU ROAD EAST STA. 98+00 TO END.dwg: December 4, 2018

JOB NO. XX-XXX

FED. ROAD DIST. NO.	STATE	FED. AID PROJ. NO.	FISCAL YEAR	SHEET NO.	TOTAL SHEETS
KAUAI	HAW.	STP-5010(002)	2021	XX	XX




THIS WORK WAS PREPARED BY ME OR UNDER MY SUPERVISION AND CONSTRUCTION OF THIS PROJECT WILL BE UNDER MY OBSERVATION AS DEFINED IN SECTION 16-115-2, HAWAII ADMINISTRATIVE RULES, DEPARTMENT OF COMMERCE AND CONSUMER AFFAIRS, STATE OF HAWAII. PROFESSIONAL ENGINEERS, ARCHITECTS, SURVEYORS AND LANDSCAPE ARCHITECTS.

LICENSE EXPIRES: APRIL 30, 2018

DWG. NO. **C-217**
SHEET XX OF XX

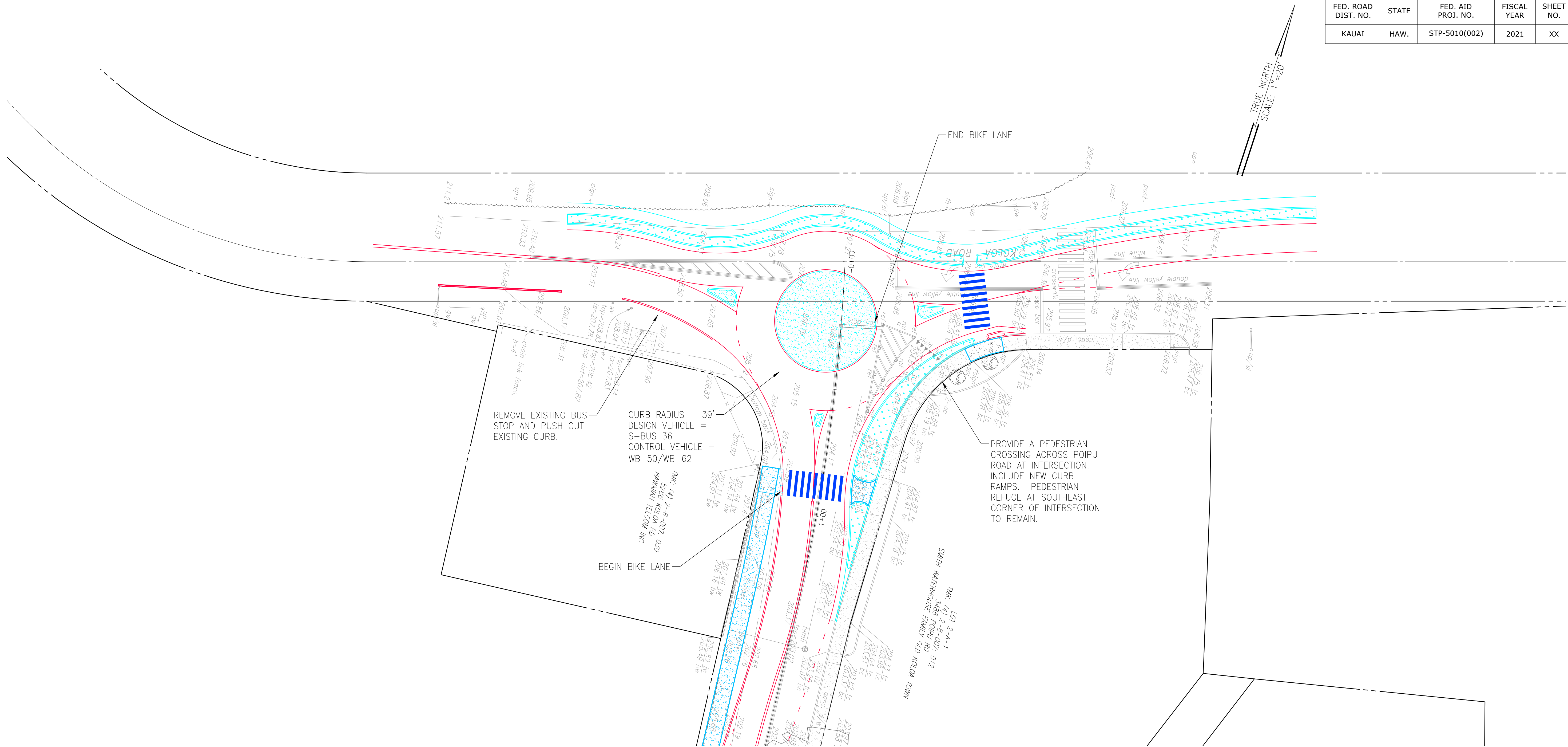
0 1 2
LINE IS 2 INCHES AT FULL SIZE
(IF NOT 2-INCHES : Scale Accordingly)

REVISION	DATE	BRIEF	MADE BY	APPROVED	
<div><div></div><div><div>Austin Tsutsumi</div><div>& ASSOCIATES, INC.</div><div>Engineers & Surveyors</div></div></div>					
PO'IPU ROAD MULTIMODAL IMPROVEMENTS FEDERAL-AID PROJECT NO. STP-5010(2) PO'IPU, KOLOA, KAUAI, HAWAII					
POIPU ROAD EAST STA. 98+00 TO END					
DESIGNED BY KU, KA		DRAWN BY DO		CHECKED BY KU	
APPROVED			SUBMITTED BY		
DATE			FIRM MEMBER		DATE

DATE: XXXXXXXXXXXXX

FILE	POCKET	FOLDER	NO.

FED. ROAD DIST. NO.	STATE	FED. AID PROJ. NO.	FISCAL YEAR	SHEET NO.	TOTAL SHEETS
KAUAI	HAW.	STP-5010(002)	2021	XX	XX



REVISION	DATE	BRIEF	MADE BY	APPROVED



PO'IPU ROAD MULTIMODAL IMPROVEMENTS
FEDERAL-AID PROJECT NO. STP-5010(2)
PO'IPU, KOLOA, KAUAI, HAWAII

OLD POIPU ROAD AND
KOLOA ROAD INTERSECTION

DESIGNED BY KU, KA	DRAWN BY DO	CHECKED BY KU
--------------------	-------------	---------------

APPROVED

SUBMITTED BY

DATE	FIRM MEMBER	DATE
------	-------------	------

FILE	POCKET	FOLDER	NO.




THIS WORK WAS PREPARED BY ME OR UNDER MY SUPERVISION AND CONSTRUCTION OF THIS PROJECT WILL BE UNDER MY OBSERVATION AS DEFINED IN SECTION 16-115-2, HAWAII ADMINISTRATIVE RULES, DEPARTMENT OF COMMERCE AND CONSUMER AFFAIRS, STATE OF HAWAII, PROFESSIONAL ENGINEERS, ARCHITECTS, SURVEYORS AND LANDSCAPE ARCHITECTS.

LICENSE EXPIRES: APRIL 30, 2018

DWG. NO. **C-218**

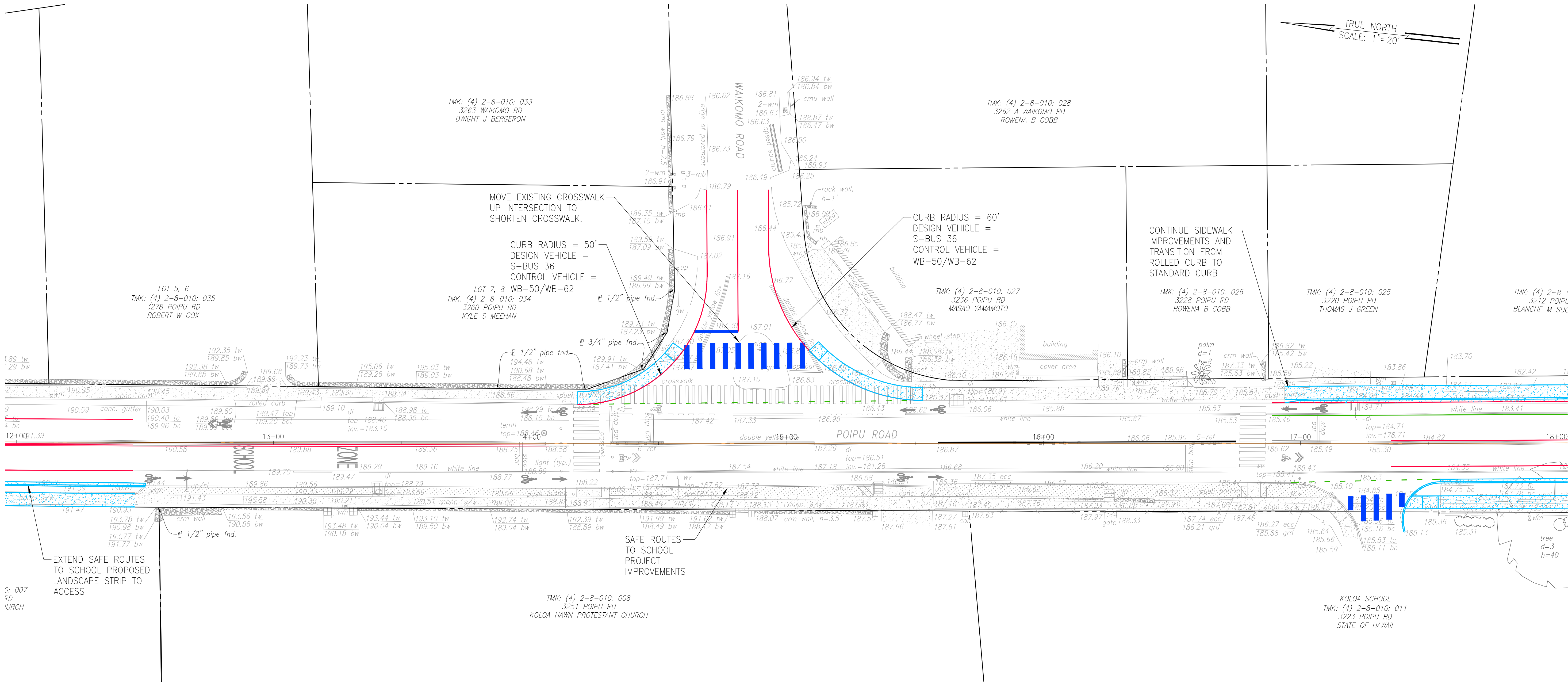
SHEET XX OF XX

0 1 2



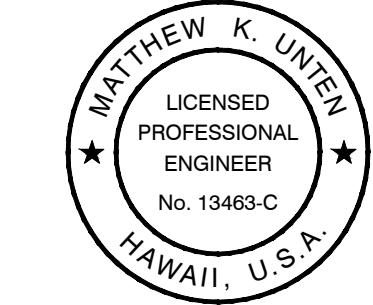
LINE IS 2 INCHES AT FULL SIZE
(If NOT 2-inches : Scale Accordingly)

FED. ROAD DIST. NO.	STATE	FED. AID PROJ. NO.	FISCAL YEAR	SHEET NO.	TOTAL SHEETS
KAUAI	HAW.	STP-5010(002)	2021	XX	XX



Y:\2016\16-013\ENGINEERING\DWG\RAISE GRANT SET\C-219 OLD POIPU ROAD AND WAIKOMO ROAD INTERSECTION.dwg: December 4, 2018

JOB NO. XX-XXX



THIS WORK WAS PREPARED BY ME OR UNDER MY SUPERVISION AND CONSTRUCTION OF THIS PROJECT WILL BE UNDER MY OBSERVATION AS DEFINED IN SECTION 16-115-2, HAWAII ADMINISTRATIVE RULES, DEPARTMENT OF COMMERCE AND CONSUMER AFFAIRS, STATE OF HAWAII. PROFESSIONAL ENGINEERS, ARCHITECTS, SURVEYORS AND LANDSCAPE ARCHITECTS.

LICENSE EXPIRES: APRIL 30, 2018

DWG. NO. **C-219**
SHEET XX OF XX

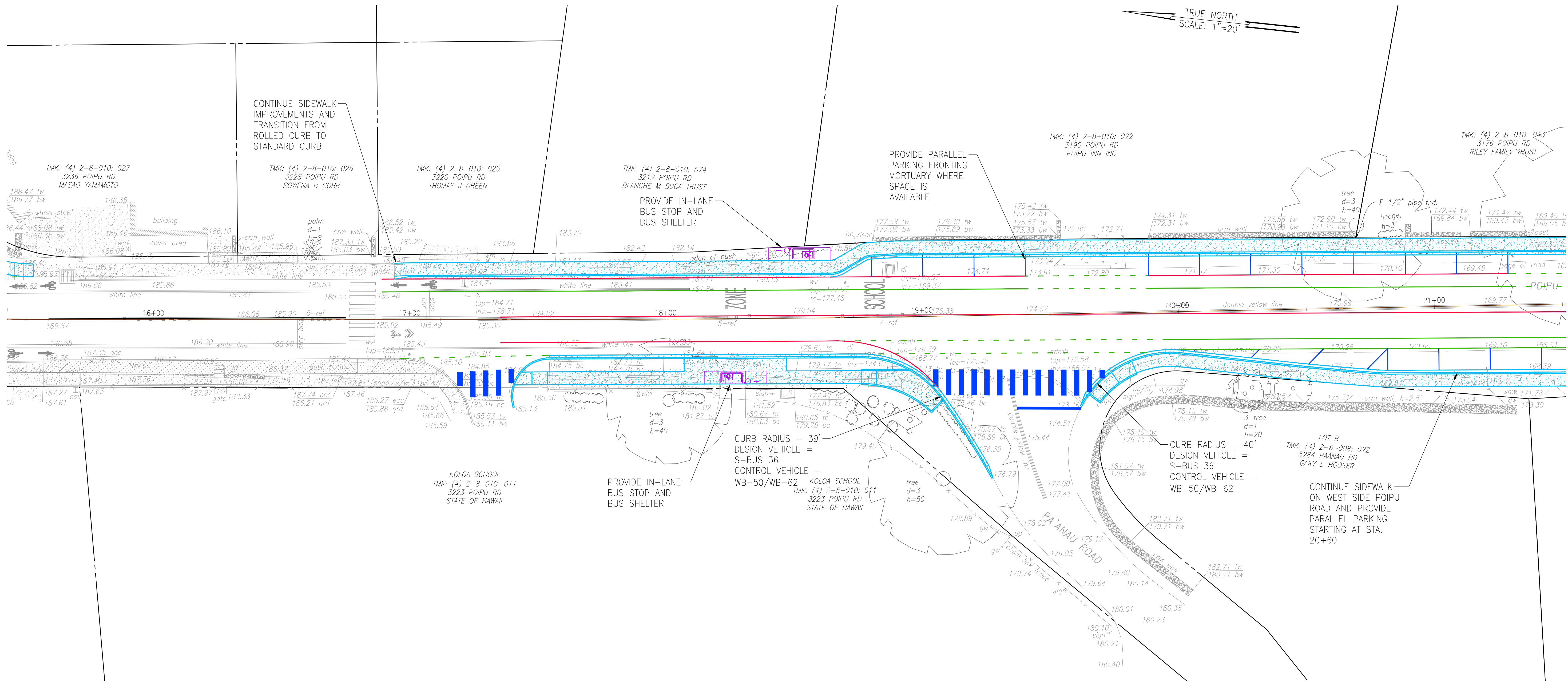
0 1 2
LINE IS 2 INCHES AT FULL SIZE
(IF NOT 2-inches : Scale Accordingly)

REVISION	DATE	BRIEF	MADE BY	APPROVED
Austin Tsutsumi & ASSOCIATES, INC. Engineers & Surveyors				
PO'IPU ROAD MULTIMODAL IMPROVEMENTS FEDERAL-AID PROJECT NO. STP-5010(2) PO'IPU, KOLOA, KAUAI, HAWAII				
OLD POIPU ROAD AND WAIKOMO ROAD INTERSECTION				
DESIGNED BY: KU, KA	DRAWN BY: DO	CHECKED BY: KU	APPROVED	
DATE		FIRM MEMBER	DATE	

FILE	POCKET	FOLDER	NO.

DATE: XXXXXXXXXXXXX

FED. ROAD DIST. NO.	STATE	FED. AID PROJ. NO.	FISCAL YEAR	SHEET NO.	TOTAL SHEETS
KAUAI	HAW.	STP-5010(002)	2021	XX	XX



THIS WORK WAS PREPARED BY ME OR UNDER MY SUPERVISION AND CONSTRUCTION OF THIS PROJECT WILL BE UNDER MY OBSERVATION AS DEFINED IN SECTION 16-115-2, HAWAII ADMINISTRATIVE RULES, DEPARTMENT OF COMMERCE AND CONSUMER AFFAIRS, STATE OF HAWAII. PROFESSIONAL ENGINEERS, ARCHITECTS, SURVEYORS AND LANDSCAPE ARCHITECTS.

LICENSE EXPIRES: APRIL 30, 2018

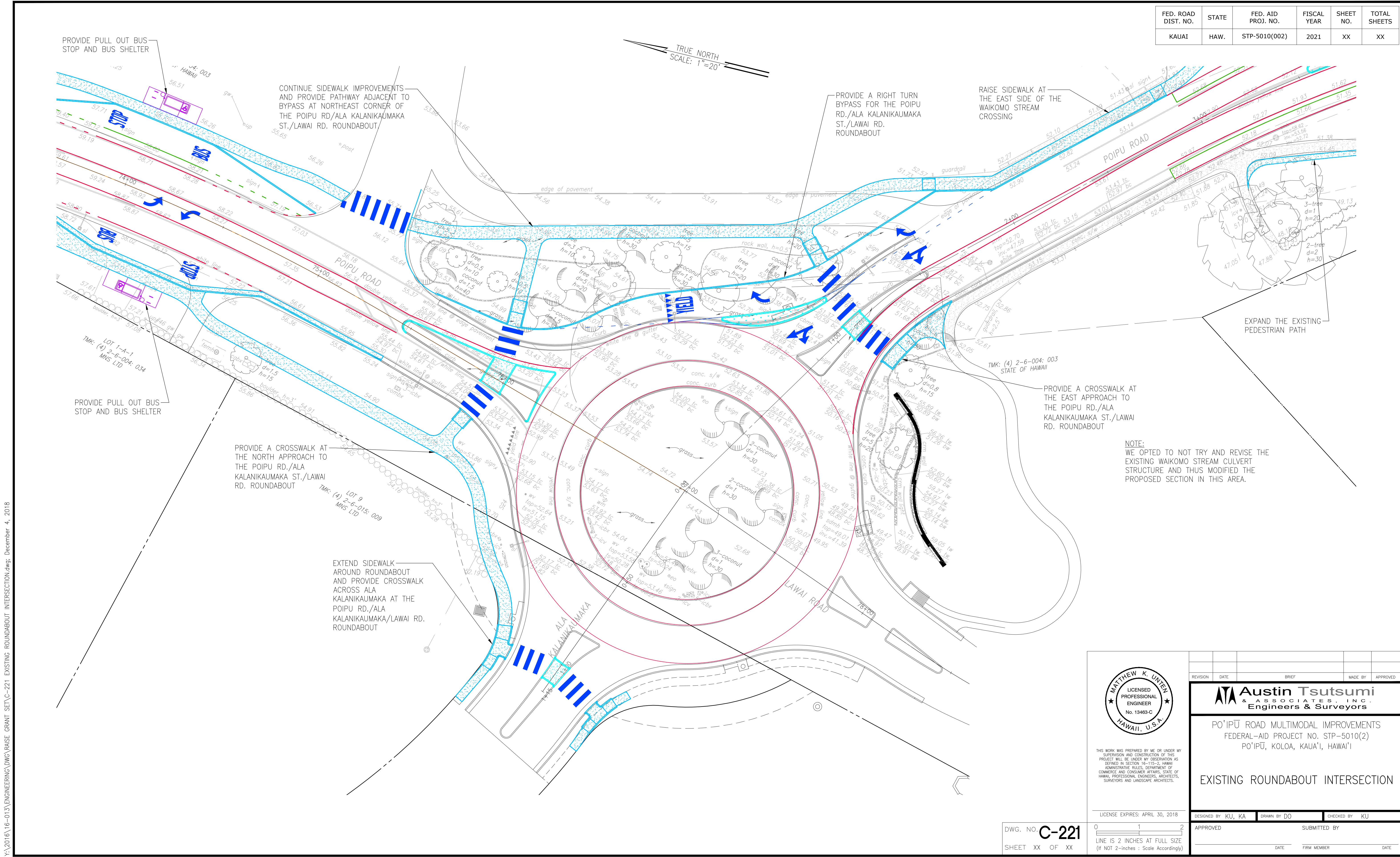
0 1 2
LINE IS 2 INCHES AT FULL SIZE
(IF NOT 2-INCHES : Scale Accordingly)

DWG. NO. **C-220**
SHEET XX OF XX

REVISION	DATE	BRIEF	MADE BY	APPROVED
Austin Tsutsumi & Associates, Inc. Engineers & Surveyors				
PO'IPU ROAD MULTIMODAL IMPROVEMENTS FEDERAL-AID PROJECT NO. STP-5010(2) PO'IPU, KOLOA, KAUAI, HAWAII				
OLD POIPU ROAD AND PAANAO ROAD INTERSECTION				
DESIGNED BY: KU, KA	DRAWN BY: DO	CHECKED BY: KU	APPROVED	
DATE		FIRM MEMBER	DATE	

Y:\2016\16-013\ENGINEERING\DWG\RAISE GRANT SET\C-220 OLD POIPU ROAD AND PAANAO ROAD INTERSECTION.dwg, December 4, 2018

FED. ROAD DIST. NO.	STATE	FED. AID PROJ. NO.	FISCAL YEAR	SHEET NO.	TOTAL SHEETS
KAUAI	HAW.	STP-5010(002)	2021	XX	XX



NOTE:
WE OPTED TO NOT TRY AND REVISE THE
EXISTING WAIKOMO STREAM CULVERT
STRUCTURE AND THUS MODIFIED THE
PROPOSED SECTION IN THIS AREA.

Matthew K. Unten

LICENSED PROFESSIONAL ENGINEER

No. 13463-C

HAWAII, U.S.A.

THIS WORK WAS PREPARED BY ME OR UNDER MY SUPERVISION AND CONSTRUCTION OF THIS PROJECT WILL BE UNDER MY OBSERVATION AS DEFINED IN SECTION 16-115-2, HAWAII ADMINISTRATIVE RULES, DEPARTMENT OF COMMERCE AND CONSUMER AFFAIRS, STATE OF HAWAII. PROFESSIONAL ENGINEERS, ARCHITECTS, SURVEYORS AND LANDSCAPE ARCHITECTS.

LICENSE EXPIRES: APRIL 30, 2018

DESIGNED BY: KU, KA

DRAWN BY: DO

CHECKED BY: KU

APPROVED

SUBMITTED BY

DATE

FIRM MEMBER

DATE

PO'IPU ROAD MULTIMODAL IMPROVEMENTS

FEDERAL-AID PROJECT NO. STP-5010(2)

PO'IPU, KOLOA, KAUAI, HAWAII

EXISTING ROUNDABOUT INTERSECTION

DWG. NO. C-221

SHEET XX OF XX

0 1 2

LINE IS 2 INCHES AT FULL SIZE

(IF NOT 2-INCHES : Scale Accordingly)

FILE

POCKET

FOLDER

NO.

DATE: XXXXXXXXXXXXX

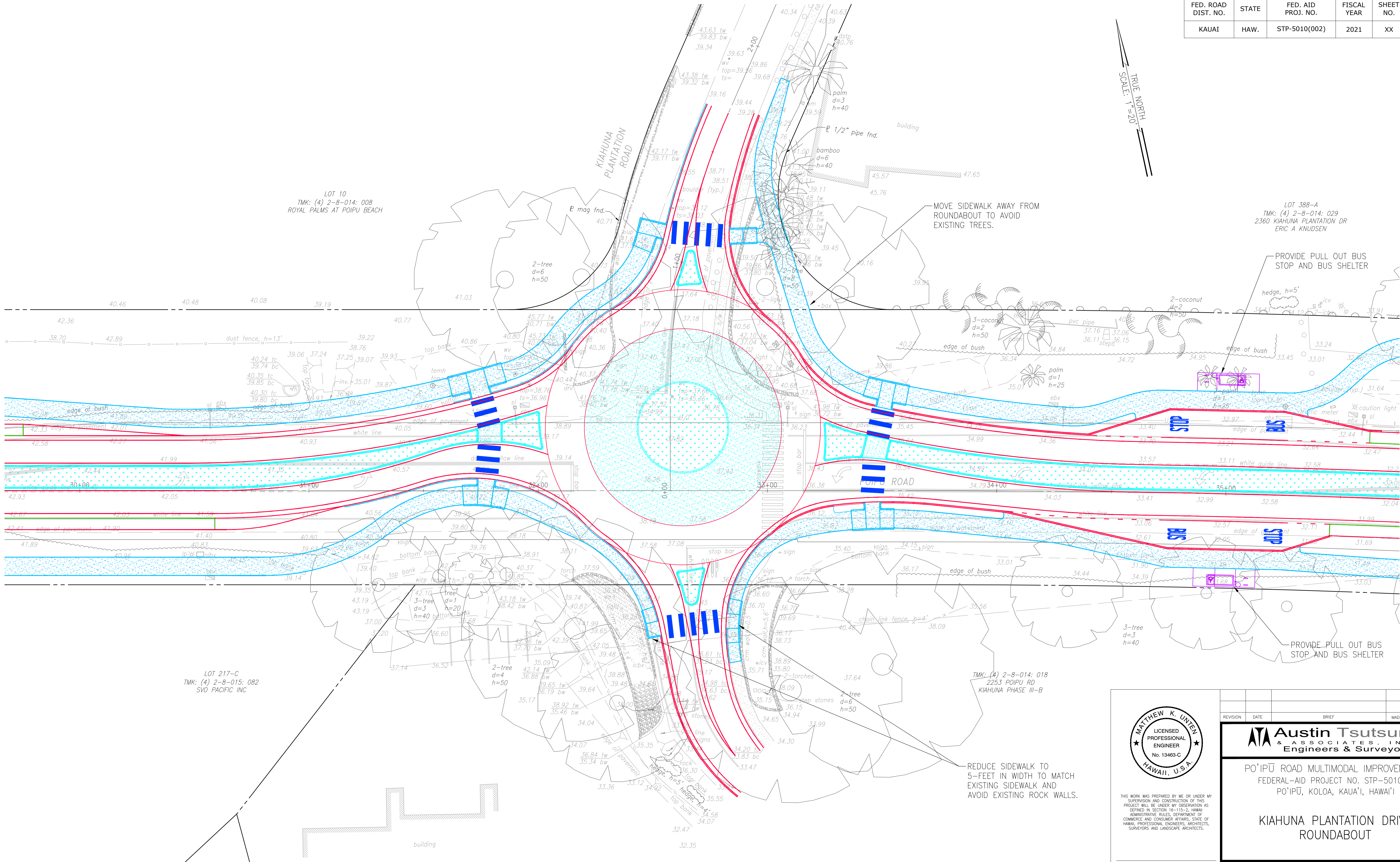
Y:\2016\16-013\ENGINEERING\DWG\RAISE GRANT SET\C-221 EXISTING ROUNDABOUT INTERSECTION.dwg; December 4, 2018

JOB NO. XX-XXX

Y:\2016\16-013\ENGINEERING\DWG\RAISE GRANT SET\C-224 KIAHUNA PLANTATION DRIVE ROUNDABOUT.dwg, December 4, 2018

JOB NO. XX-XXX

FED. ROAD DIST. NO.	STATE	FED. AID PROJ. NO.	FISCAL YEAR	SHEET NO.	TOTAL SHEETS
KAUAI	HAW.	STP-5010(002)	2021	XX	XX



THIS WORK WAS PREPARED BY ME OR UNDER MY SUPERVISION AND CONSTRUCTION OF THIS PROJECT WILL BE UNDER MY OBSERVATION AS DEFINED IN SECTION 16-115-2, HAWAII ADMINISTRATIVE RULES, DEPARTMENT OF COMMERCE AND CONSUMER AFFAIRS, STATE OF HAWAII. PROFESSIONAL ENGINEERS, ARCHITECTS, SURVEYORS AND LANDSCAPE ARCHITECTS.

LICENSE EXPIRES: APRIL 30, 2018

0 1 2
LINE IS 2 INCHES AT FULL SIZE
(IF NOT 2-INCHES : Scale Accordingly)

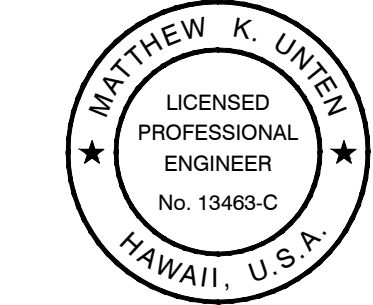
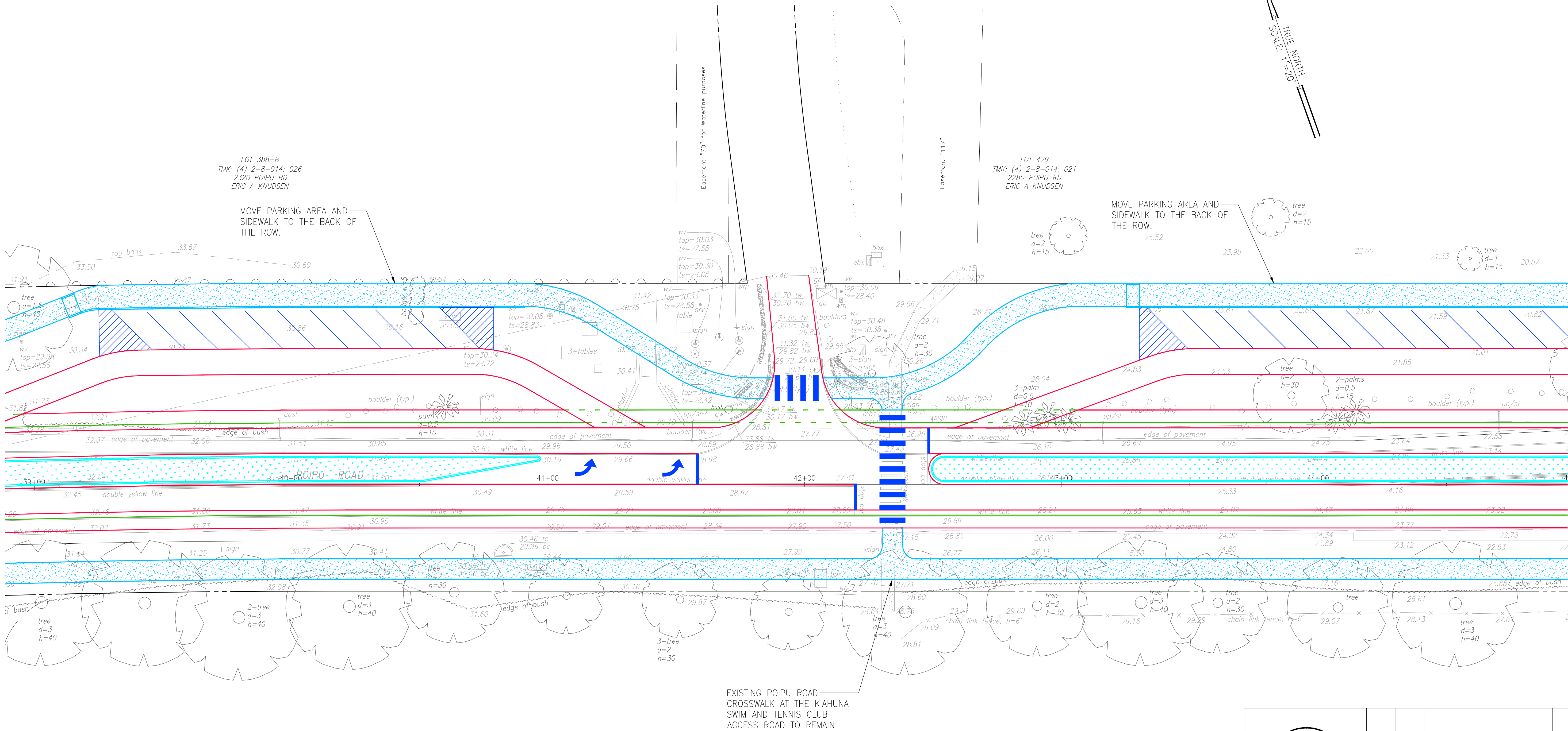
DWG. NO. **C-224**
SHEET XX OF XX

REVISION	DATE	BRIEF	MADE BY	APPROVED
Austin Tsutsumi & ASSOCIATES, INC. Engineers & Surveyors				
PO'IPU ROAD MULTIMODAL IMPROVEMENTS FEDERAL-AID PROJECT NO. STP-5010(2) PO'IPU, KOLOA, KAUAI, HAWAII				
KIAHUNA PLANTATION DRIVE ROUNDABOUT				
DESIGNED BY: KU, KA	DRAWN BY: DO	CHECKED BY: KU	APPROVED	
DATE		FIRM MEMBER	DATE	

DATE: XXXXXXXXXXXXX

FILE	POCKET	FOLDER	NO.

FED. ROAD DIST. NO.	STATE	FED. AID PROJ. NO.	FISCAL YEAR	SHEET NO.	TOTAL SHEETS
KAUAI	HAW.	STP-5010(002)	2021	XX	XX



THIS WORK WAS PREPARED BY ME OR UNDER MY SUPERVISION AND CONSTRUCTION OF THIS PROJECT WILL BE UNDER MY OBSERVATION AS DEFINED IN SECTION 16-115-2, HAWAII ADMINISTRATIVE RULES, DEPARTMENT OF COMMERCE AND CONSUMER AFFAIRS, STATE OF HAWAII. PROFESSIONAL ENGINEERS, ARCHITECTS, SURVEYORS AND LANDSCAPE ARCHITECTS.

LICENSE EXPIRES: APRIL 30, 2018

DWG. NO. **C-225**
SHEET XX OF XX

0 1 2
LINE IS 2 INCHES AT FULL SIZE
(IF NOT 2-INCHES : Scale Accordingly)

REVISION	DATE	BRIEF	MADE BY	APPROVED
Austin Tsutsumi & Associates, Inc. Engineers & Surveyors				
PO'IPU ROAD MULTIMODAL IMPROVEMENTS FEDERAL-AID PROJECT NO. STP-5010(2) PO'IPU, KOLOA, KAUAI, HAWAII				
POIPU ROAD EAST AND KIAHUNA TENNIS CLUB INTERSECTION				
DESIGNED BY: KU, KA	DRAWN BY: DO	CHECKED BY: KU	APPROVED	
DATE		FIRM MEMBER	DATE	

FILE	POCKET	FOLDER	NO.

Y:\2016\16-013\ENGINEERING\DWG\RAISE GRANT SET\C-225 POIPU ROAD EAST AND KIAHUNA TENNIS CLUB INTERSECTION.dwg: December 4, 2018

FED. ROAD DIST. NO.	STATE	FED. AID PROJ. NO.	FISCAL YEAR	SHEET NO.	TOTAL SHEETS
KAUAI	HAW.	STP-5010(002)	2021	XX	XX

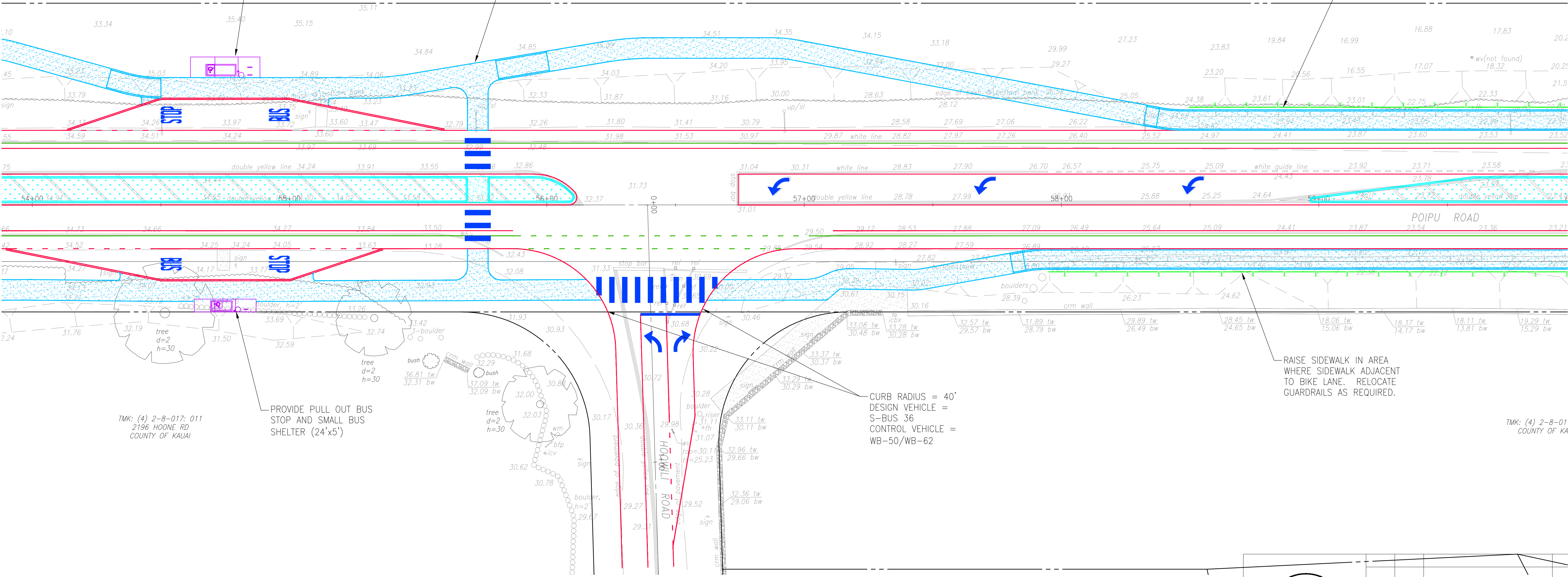
TRUE NORTH
SCALE: 1"=20'

LOT 171, 490
TMK: (4) 2-8-014: 019
ERIC A KNUDSEN

PROVIDE PULL OUT BUS STOP AND BUS SHELTER. GRADING IN THIS AREA WILL BE REQUIRED DUE TO EXISTING SLOPES

PROVIDE A CROSSWALK AT THE WEST APPROACH TO THE POIPU RD./HOOWILI RD. INT.

RAISE SIDEWALK IN AREA WHERE SIDEWALK ADJACENT TO BIKE LANE. RELOCATE GUARDRAILS AS REQUIRED.



TMK: (4) 2-8-017: 011
2196 HOONE RD
COUNTY OF KAUAI

PROVIDE PULL OUT BUS STOP AND SMALL BUS SHELTER (24'x5')

CURB RADIUS = 40'
DESIGN VEHICLE = S-BUS 36
CONTROL VEHICLE = WB-50/WB-62

RAISE SIDEWALK IN AREA WHERE SIDEWALK ADJACENT TO BIKE LANE. RELOCATE GUARDRAILS AS REQUIRED.

TMK: (4) 2-8-01
COUNTY OF KA




THIS WORK WAS PREPARED BY ME OR UNDER MY SUPERVISION AND CONSTRUCTION OF THIS PROJECT WILL BE UNDER MY OBSERVATION AS DEFINED IN SECTION 16-115-2, HAWAII ADMINISTRATIVE RULES, DEPARTMENT OF COMMERCE AND CONSUMER AFFAIRS, STATE OF HAWAII. PROFESSIONAL ENGINEERS, ARCHITECTS, SURVEYORS AND LANDSCAPE ARCHITECTS.

LICENSE EXPIRES: APRIL 30, 2018

DWG. NO. **C-226**
SHEET XX OF XX

0 1 2
LINE IS 2 INCHES AT FULL SIZE
(IF NOT 2-INCHES : Scale Accordingly)

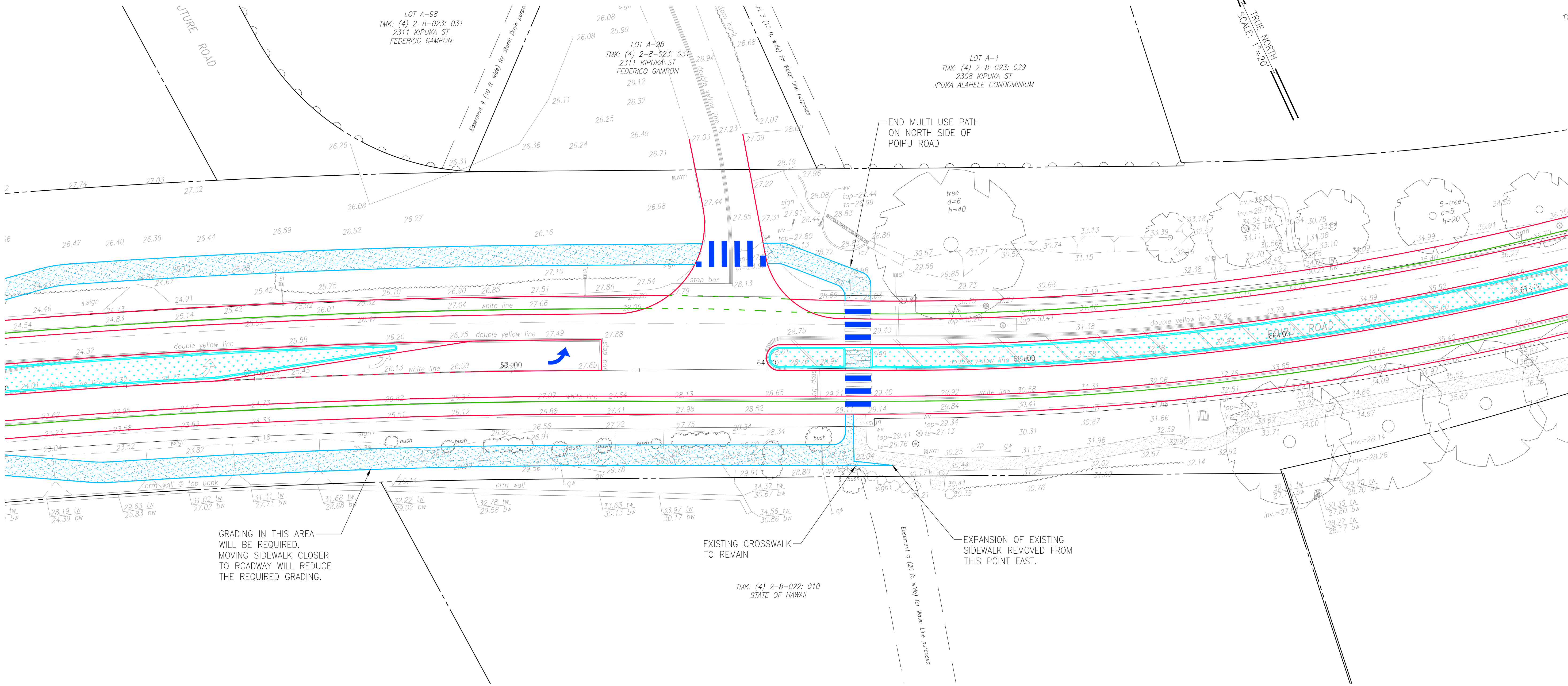
REVISION	DATE	BRIEF	MADE BY	APPROVED
<div><div></div><div><div>Austin Tsutsumi</div><div>& ASSOCIATES, INC.</div><div>Engineers & Surveyors</div></div></div>				
PO'IPU ROAD MULTIMODAL IMPROVEMENTS FEDERAL-AID PROJECT NO. STP-5010(2) PO'IPU, KOLOA, KAUAI, HAWAII				
POIPU ROAD EAST AND HOOWILI ROAD INTERSECTION				
DESIGNED BY KU, KA		DRAWN BY DO		CHECKED BY KU
APPROVED			SUBMITTED BY	
DATE		FIRM MEMBER		DATE

DATE: XXXXXXXXXXXXX

FILE	POCKET	FOLDER	NO.

Y:\2016\16-013\ENGINEERING\DWG\RAISE GRANT SET\C-226 POIPU ROAD EAST AND HOOWILI ROAD INTERSECTION.dwg; December 4, 2018

FED. ROAD DIST. NO.	STATE	FED. AID PROJ. NO.	FISCAL YEAR	SHEET NO.	TOTAL SHEETS
KAUAI	HAW.	STP-5010(002)	2021	XX	XX



REVISION

DATE

BRIEF

MADE BY

APPROVED

Austin Tsutsumi

& ASSOCIATES, INC.

Engineers & Surveyors

PO'IPU ROAD MULTIMODAL IMPROVEMENTS
FEDERAL-AID PROJECT NO. STP-5010(2)
PO'IPU, KOLOA, KAUAI, HAWAII

POIPU ROAD EAST AND KIPUKA
STREET INTERSECTION

DESIGNED BY: KU, KA

DRAWN BY: DO

CHECKED BY: KU

APPROVED

SUBMITTED BY

DATE

FIRM MEMBER

DATE

Matthew K. Unten

LICENSED PROFESSIONAL ENGINEER

No. 13463-C

HAWAII, U.S.A.

THIS WORK WAS PREPARED BY ME OR UNDER MY SUPERVISION AND CONSTRUCTION OF THIS PROJECT WILL BE UNDER MY OBSERVATION AS DEFINED IN SECTION 16-115-2, HAWAII ADMINISTRATIVE RULES, DEPARTMENT OF COMMERCE AND CONSUMER AFFAIRS, STATE OF HAWAII. PROFESSIONAL ENGINEERS, ARCHITECTS, SURVEYORS AND LANDSCAPE ARCHITECTS.

LICENSE EXPIRES: APRIL 30, 2018

0 1 2
LINE IS 2 INCHES AT FULL SIZE
(IF NOT 2-INCHES : Scale Accordingly)

DWG. NO. **C-227**

SHEET XX OF XX

DATE: XXXXXXXXXXXXX

FILE

POCKET

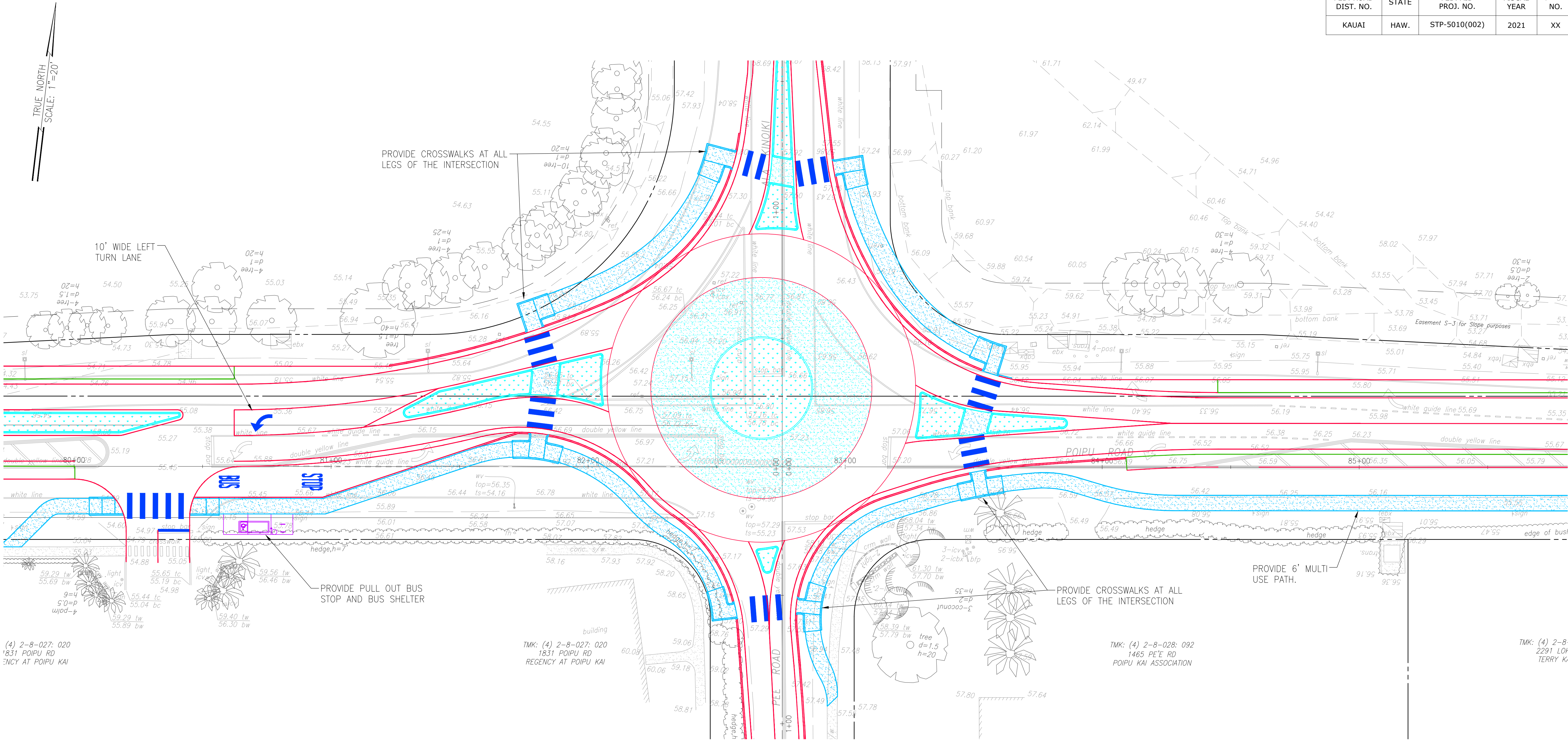
FOLDER

NO.

Y:\2016\16-013\ENGINEERING\DWG\RAISE GRANT SET\C-227 POIPU ROAD EAST AND KIPUKA STREET INTERSECTION.dwg; December 4, 2018

JOB NO. XX-XXX

FED. ROAD DIST. NO.	STATE	FED. AID PROJ. NO.	FISCAL YEAR	SHEET NO.	TOTAL SHEETS
KAUAI	HAW.	STP-5010(002)	2021	XX	XX



(4) 2-8-027: 020
1831 POIPU RD
REGENCY AT POIPU KAI

TMK: (4) 2-8-027: 020
1831 POIPU RD
REGENCY AT POIPU KAI

TMK: (4) 2-8-028: 092
1465 PE'E RD
POIPU KAI ASSOCIATION

TMK: (4) 2-8-
2291 LOI
TERRY K.



THIS WORK WAS PREPARED BY ME OR UNDER MY SUPERVISION AND CONSTRUCTION OF THIS PROJECT WILL BE UNDER MY OBSERVATION AS DEFINED IN SECTION 16-115-2, HAWAII ADMINISTRATIVE RULES, DEPARTMENT OF COMMERCE AND CONSUMER AFFAIRS, STATE OF HAWAII. PROFESSIONAL ENGINEERS, ARCHITECTS, SURVEYORS AND LANDSCAPE ARCHITECTS.

LICENSE EXPIRES: APRIL 30, 2018

DWG. NO. **C-228**
SHEET XX OF XX

0 1 2
LINE IS 2 INCHES AT FULL SIZE
(IF NOT 2-INCHES : Scale Accordingly)

REVISION	DATE	BRIEF	MADE BY	APPROVED
Austin Tsutsumi & ASSOCIATES, INC. Engineers & Surveyors				
PO'IPU ROAD MULTIMODAL IMPROVEMENTS FEDERAL-AID PROJECT NO. STP-5010(2) PO'IPU, KOLOA, KAUAI, HAWAII				
ALA KINOKI ROUNDABOUT				
DESIGNED BY: KU, KA	DRAWN BY: DO	CHECKED BY: KU	APPROVED	
DATE		FIRM MEMBER	DATE	

FILE	POCKET	FOLDER	NO.