

**NOTES:**

**CONCRETE PAVEMENT**

1. 4" (RESIDENTIAL), 6" (COMMERCIAL) - REINFORCED WITH 6X6 - 6/6 WIRE FABRIC SHALL BE CONSTRUCTED.
2. PROVIDE CONSTRUCTION JOINTS AT EDGE PAVEMENT AND PROPERTY LINE.
3. THE MINIMUM WIDTH ( $W_1$ ) AT THE EDGE OF PAVEMENT FOR ANY WIDTH OF DRIVEWAY SHALL BE NOT LESS THAN 24 FEET NOR MORE THAN 40 FEET.
4. DRIVEWAY APPROACH SHALL BE LOCATED NOT LESS THAN 15 FEET FROM THE EDGE OF ANY TURNING RADIUS.

**ASPHALT CONCRETE PAVEMENT**

1. THE STRUCTURAL SECTION SHALL CONSIST OF 2" A.C. WITH 4" BASE COURSE.

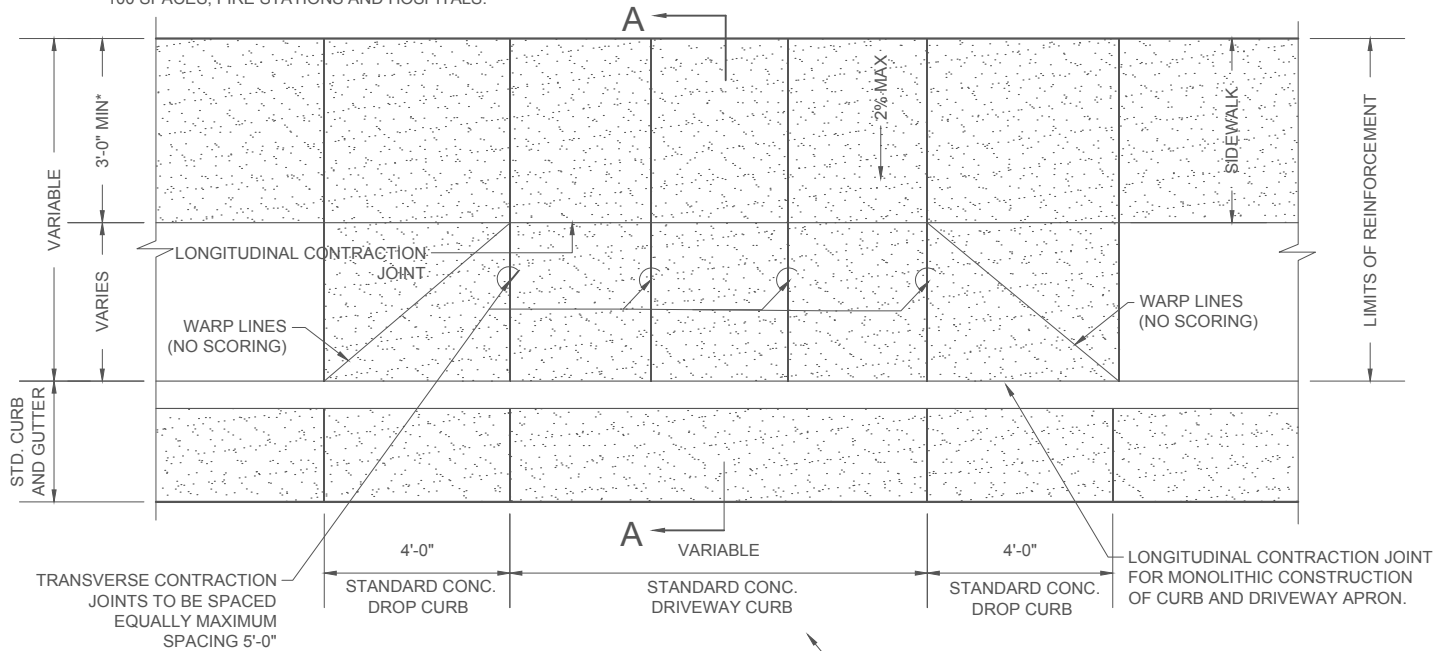
**R-48**

**STANDARD  
DETAILS**

**RESIDENTIAL DRIVEWAY  
WITHOUT CURB AND GUTTER**

**COUNTY OF KAUAI**

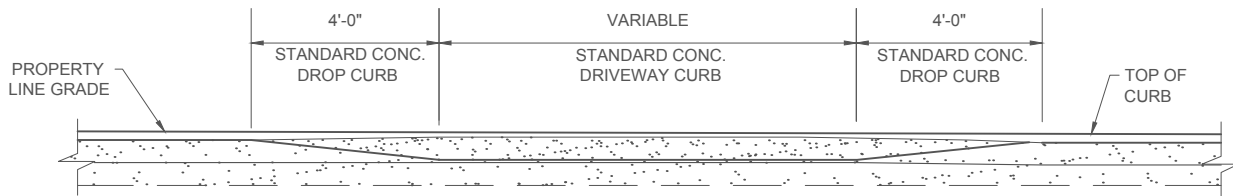
CURB RETURN TYPE DRIVEWAY MAY BE PERMITTED FOR PARKING AREAS EXCEEDING 100 SPACES, FIRE STATIONS AND HOSPITALS.



### PLAN

NO SCALE

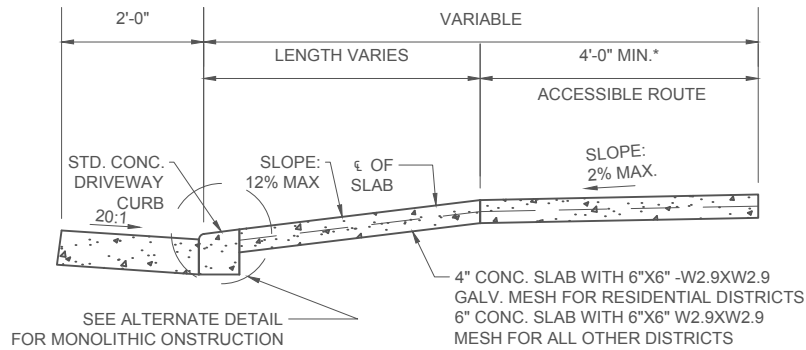
LIMITS OF REINFORCEMENT 4" THICK CONCRETE REINFORCED WITH 6"X6"-W2.9X2.9 GALV. WELDED WIRE FABRIC FOR RESIDENTIAL DISTRICTS. 6" THICK FOR ALL OTHER DISTRICTS. SURFACE SHALL BE BROOM FINISHED.



### ELEVATION

SCALE: 1/4"=1'-0"

MATCH WIDTH OF EXISTING SIDEWALK WHENEVER POSSIBLE



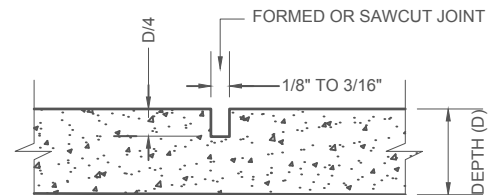
### SECTION A-A

SCALE: 3/8"=1'-0"

SEE ALTERNATE DETAIL FOR MONOLITHIC CONSTRUCTION OF CURB AND DRIVEWAY APRON

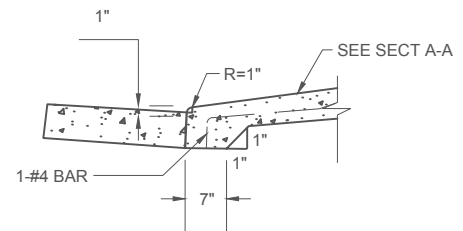
#### NOTES

1. FOR NEW SUBDIVISIONS, PROVIDE CENTERLINE ROADWAY STATIONING TO THE CENTERLINE OF THE DRIVEWAY (APPLICABLE TO STD. DET. R-7).
2. THIS DETAIL IS FOR GUIDANCE ONLY. A DESIGN DETAIL MAY BE REQUIRED FOR EACH SPECIFIC SITE. THE DETAIL MUST COMPLY WITH THE REQUIREMENTS SHOWN.
3. THE FINISHED SURFACE OF APRONS SHALL BE BROOM FINISHED PERPENDICULAR TO CURB LINE.
4. THE LONGITUDINAL AND TRANSVERSE CONTRACT JOINTS ARE SHOWN FOR GUIDANCE ONLY. JOINTS SHALL BE CONSTRUCTED IN ACCORDANCE WITH ENGINEERING AND POLICY MEMORANDUM NO. CEB-1-09.



### LONGITUDINAL TRANSVERSE ALTERNATE DETAIL

NO SCALE



### ALTERNATE DETAIL

SCALE: 3/8"=1'-0"

COUNTY OF KAUAI

## DRIVEWAY APRON

STANDARD DETAILS

R-29K

SCALE: AS NOTED

JULY 2014